

CATALOGO DE PARTES

*ELEVADOR
ELECTRIC* | E 25-45



MICHIGAN

PARTS ORDERING INSTRUCTIONS

HOW TO ORDER

When you order, supply the part number, quantity, model and serial numbers of your machine. Supplying this information will assure prompt, efficient handling of your order.

Since your dealer carries many parts in stock and maintains up-to-date prices on all parts, he will be able to process your order immediately. If, for some reason, the part is not in stock, he will order it from the factory. In either event, he maintains a current file of service manuals, which give all available parts ordering or technical information.

WHERE TO ORDER

Always order parts from the dealer who sold you your EP. If it is necessary for the dealer to order parts from the factory, he is able to get prompt service for you. Parts are shipped in accordance with shipping instructions given on the order.

INSTRUCTIONS FOR RETURNING PARTS

Under NO CIRCUMSTANCES will parts be accepted at the factory for credit without prior approval. EP cannot accept responsibility for parts returned without authorization.

If you have some parts which must be returned, contact your dealer. If he believes parts should be returned, he will arrange for authorization to return the parts.

CHANGES

When changes are made to the machine, revised pages for this manual will be issued. These pages must be inserted in your parts manual as soon as they are received. Failure to keep your parts manuals up to date will result in confusion and may cause you to order wrong parts.

PART LIST

The Index, describes the item on the figure you are looking at. The Part No. is a numerical description of the item and the part ordering number. The Part Name is a description of the part number in alphabetical form. The No.Req.is the quantity used on the machine.

HOW TO READ PARTS MANUAL

Tip 1:

A: The part of Index 10 is chosen by different tongue of the same series type.

Index	Part No.	Part Name	No.	Applied Date	Remark
-------	----------	-----------	-----	--------------	--------

A ⇒

9	0000-000539-00	Flatwasher Φ24	3		
10	3218-130000-00	Counter Weight	1		CPD18TV
10	3220-130000-00	Counter Weight	1		CPD20TV
10	3216-130000-00	Counter Weight	1		CPD16TV
10	3215-130000-00	Counter Weight	1		CPD15TV
10	3213-130000-00	Counter Weight	1		CPD13TV
11	1220-150008-00	Screw	2		

B: The part of Index 7 is Optional.

B ⇒

KIT	3115-WHK-0A02	Kit for slider	1		
7	3218-800001-10	Fork	1		100*40*920
7	3218-800001-20	Fork	1		100*40*1070
7	3218-800001-30	Fork	1		100*40*1150
7	3218-800001-40	Fork	1		100*40*1200
8	3218-800002-00	Pin assembly	2		

C: The number of Index 40 is chosen by the actual requirements.

C ⇒

39	3218-600006-00	Shock Absorber	3		
40	3218-332002-00	Collar	Req		

D: The part of Index 34 is cancelled because of the design perfect , and there is an new part which is make the use more perfect.

D ⇒

33	3218-330001-A0	Cushion	1		
34	01 3218-330005-A0	Switch	4		Cancelled
	02 CK11-56003-00	JC100 Switch	4		
35	0000-000277-00	Bolt M8×25	2		

E: The part of Index 19 has an Applicability, because it's our policy to constantly improve our products.

E-1: Record by time

-053011 :Ending on May 30, 2011.

053011- :Beginning on May 30, 2011.

E-2: Record by serial number

-S2016344 : Ending at S2016344

S2016345- : Starting at S2016345

There are three types of serial number:

1) 1 (LETTER)+7 (NUMBERS)

Applied Date: Up to February 1, 2015

2) 1 (LETTER)+ 8 (NUMBERS)

Applied Date: From February 1, 2015 to June 1, 2015

3) 1 (NUMBER)+ 8 (NUMBERS)

Applied Date: From June 1, 2015

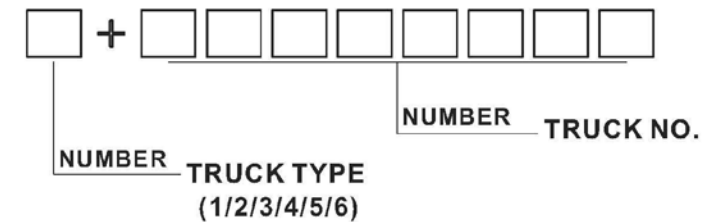
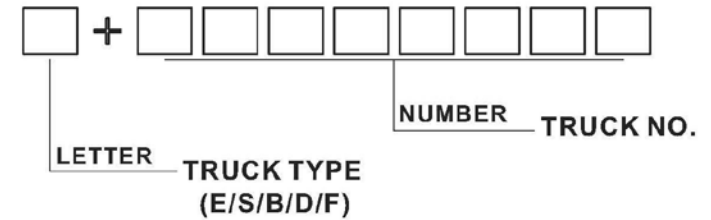
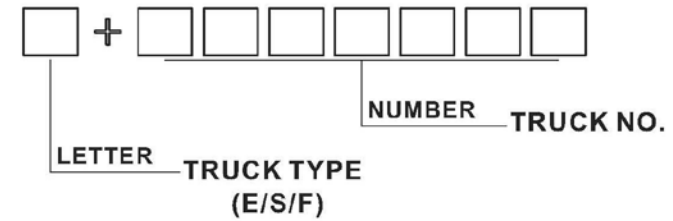
Index	Part No.	Part Name	No.	Applied Date	Remark
-------	----------	-----------	-----	--------------	--------

E →

18		0000-000277-00 Bolt M8×25	3		
19	01	3218-113000-00 Gas Spring	1	-053011	
	02	3218-113000-0A Gas Spring	1	053011-	
20		3218-110007-00 Shock Absorber	4		

F →

7	01	2125-410004- Cap	1	-S2016344	
	02	2125-410004- Cap	1	S2016345-	
8		0000-000084- Ring Wiper	1		
9		0000-000370- O-ring	1		



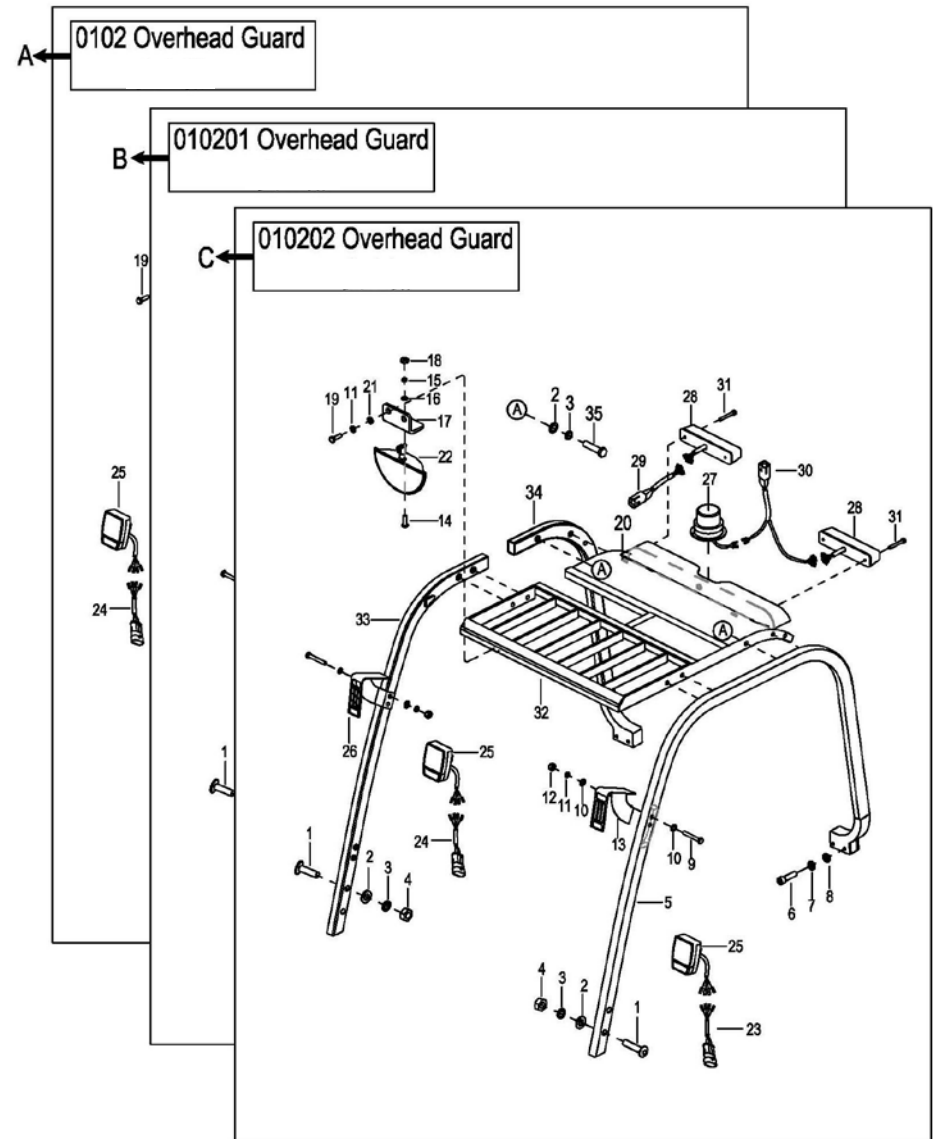
Tip 2

A: Section 0102 is the original version.

B: Section 010201 is the version that some parts in the Section 0102 have been changed.

C: Section 010202 is the version that some parts in the Section 010201 have been changed.

When you order, Please locate specific parts information of your truck by the Applied Date of parts in each version.



Index

1000 Frame System	1
0101 Frame System	2
0102 Overhead Guard	4
0103 Front Cover	6
0104 Back Cover	8
2000 Steering Control System	11
0201 Steering Control System	12
0202 Parking Brake	14
0203 Meter	16
0204 Steering Assembly	18
0205 Valve Control Linkage	21
3000 Driving System	24
0301 Driving System	25
0302 Drive axle assembly	29
0303 Brake assembly	32
0304 Drive wheel	33
0305 Differential	35
0306 Gearbox assembly	37
4000 Hydraulic System	40
0401 Steering system	41
0402 STEERING AXLE	43
0403 STEERING CYLINDER	46
5000 Electrical System	48
0501 HARNESS	49
0502 Control Bracket Assembly (ICE251B)	51

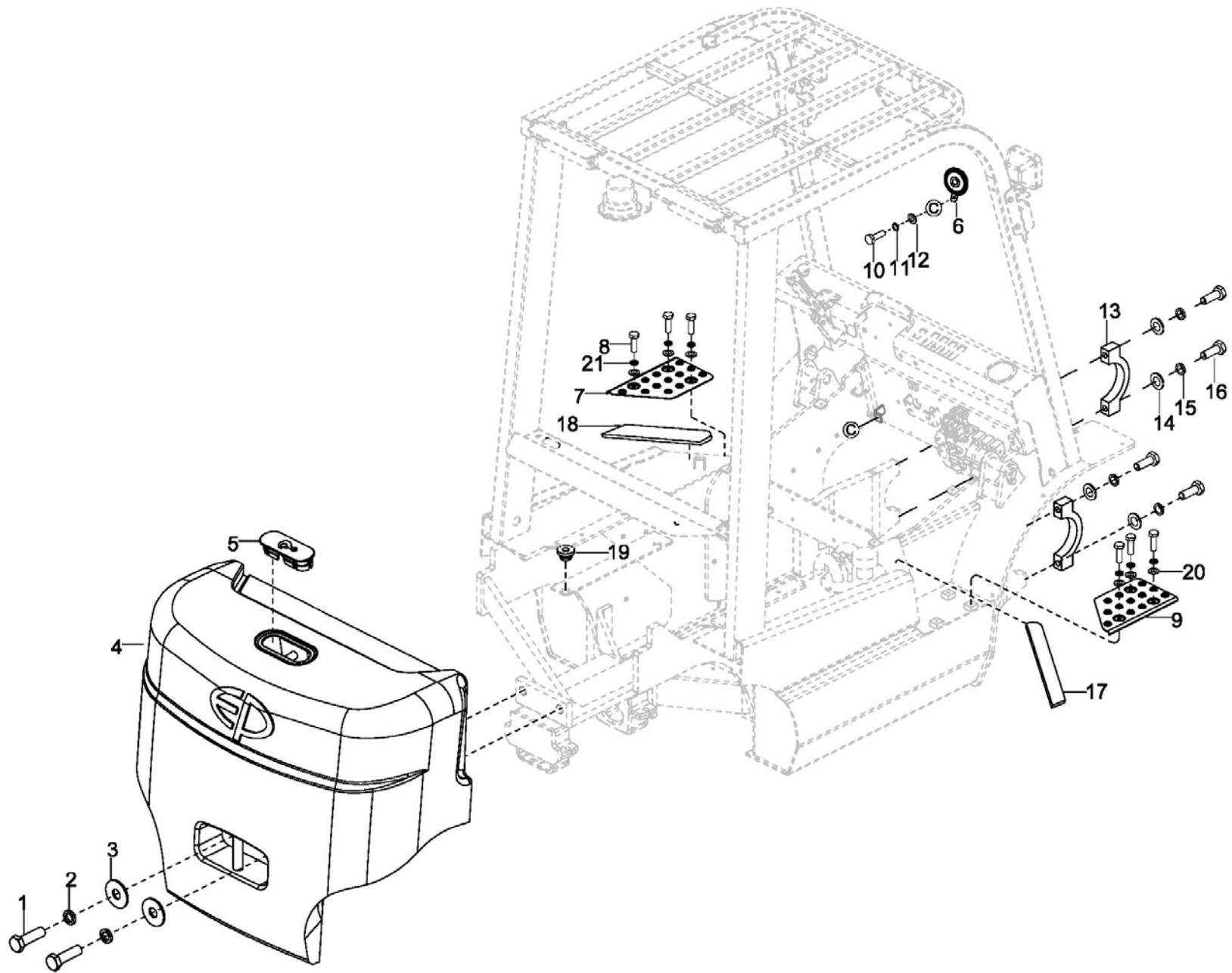
0503 Control Bracket Assembly (ICE251、EFL252)	54
0504 Cable	57
0505 Lithium Battery Assembly	59

6000 **61**

0601 Hydraulic System I	62
0602 Hydraulic System I	64
0603 Hydraulic oil	67

1000
Frame System

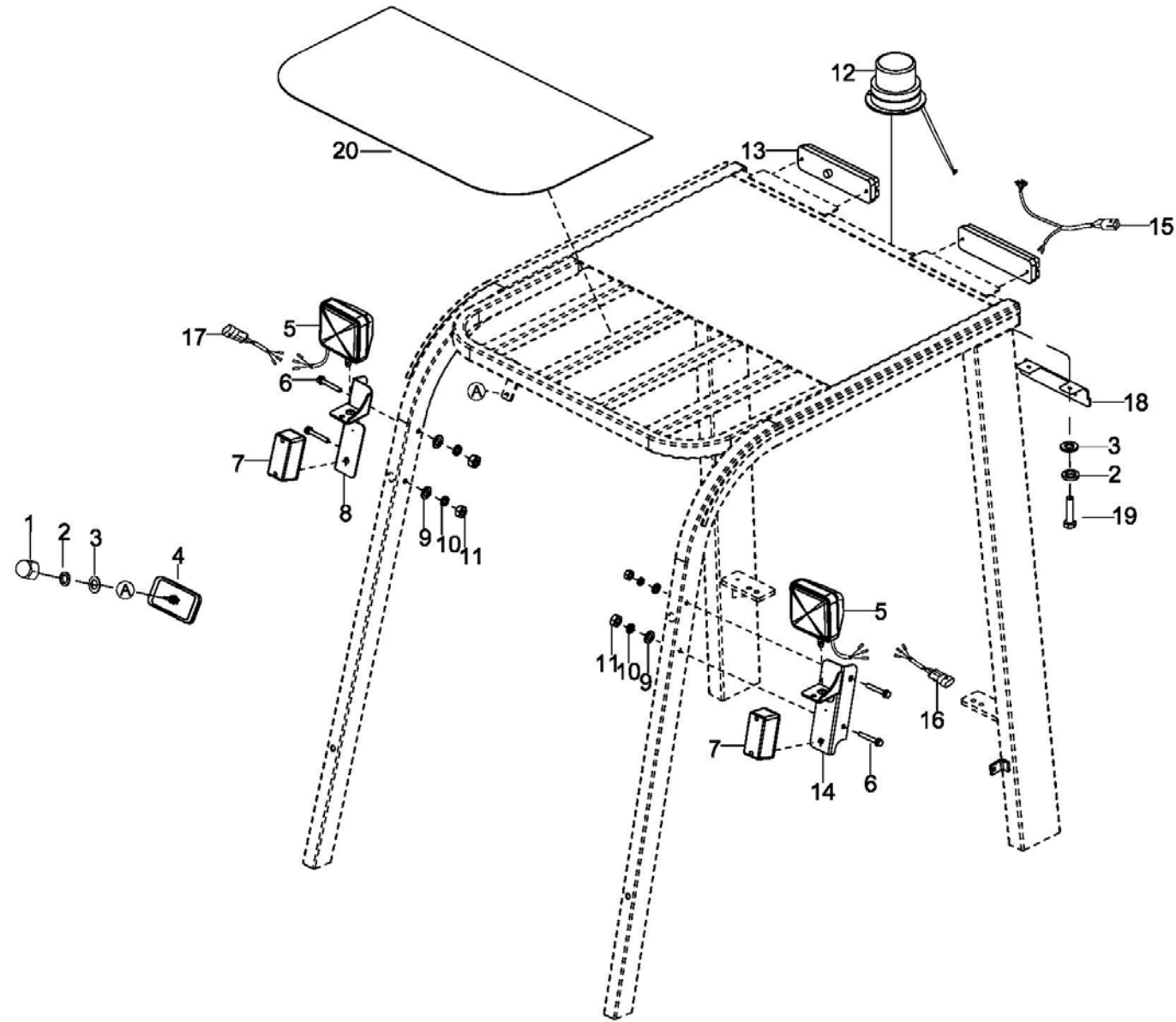
0101 Frame System



0101 Frame System

Index	Part No.	Part Name	No.	Applied Date	Remark
1	301000000463	Bolt M30×2×120	2		
2	304000000092	Lock washerø30	2		
3	3127-100004-00	Washer ø30	2		
4	3127-100003-00	Counter Weight	1		ICE251B、EFL252
4	3127-100003-10	Counter Weight	1		ICE251
5	3125-100009-00	Lifting Hole Cover	1		
6	3218-600500-00	Speaker	1		
7	7331-500019-00	Pedal L	1		
8	302000000189	Screw M8×16	6		
9	7331-500036-00	Pedal R	1		
10	301002000013	Bolt M8*20	1		
11	304003000005	Lock washer ø8	1		
12	304002000005	Plain washer ø8	1		
13	3127-100001-00	CAP	2		
14	304000000044	Plain washer ø16	4		
15	304000000055	Lock washer ø16	4		
16	301000000315	Bolt M16*1.5*80	4		
17	7331-500022-00	Cushion Mat L	1		
18	7331-500025-00	Cushion Mat R	1		
19	3218-110005-00	Rubber	4		
20	304000000040	Pain washer	6		
21	304000000052	Lock washer	6		

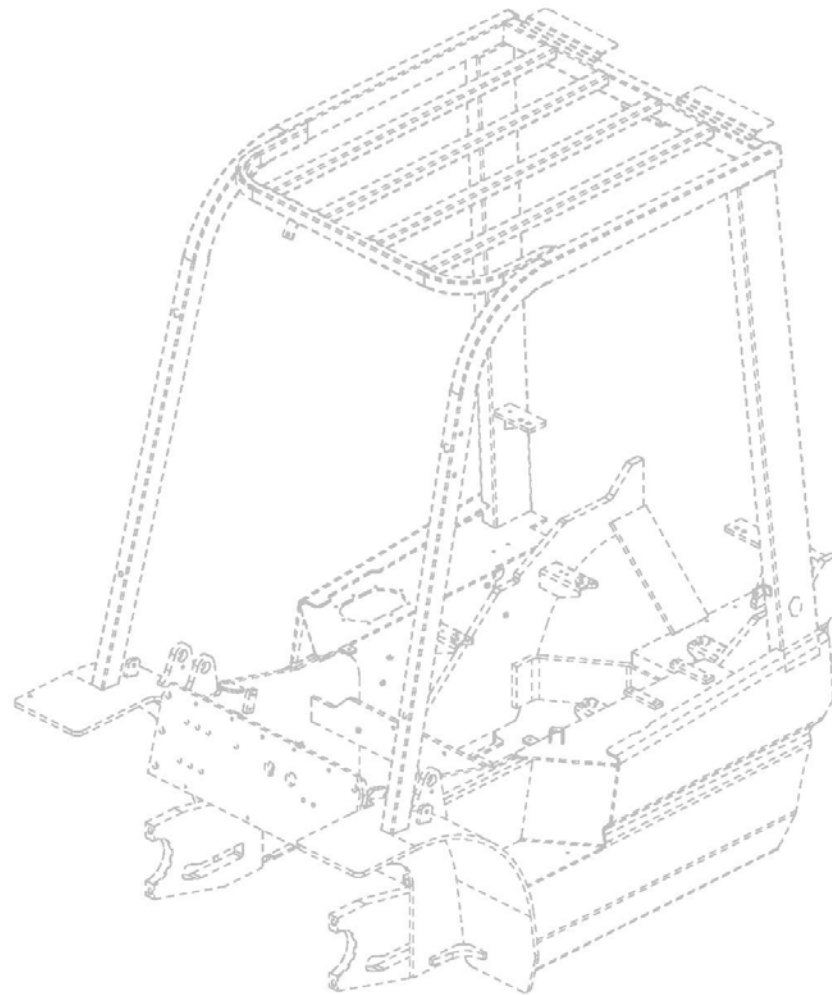
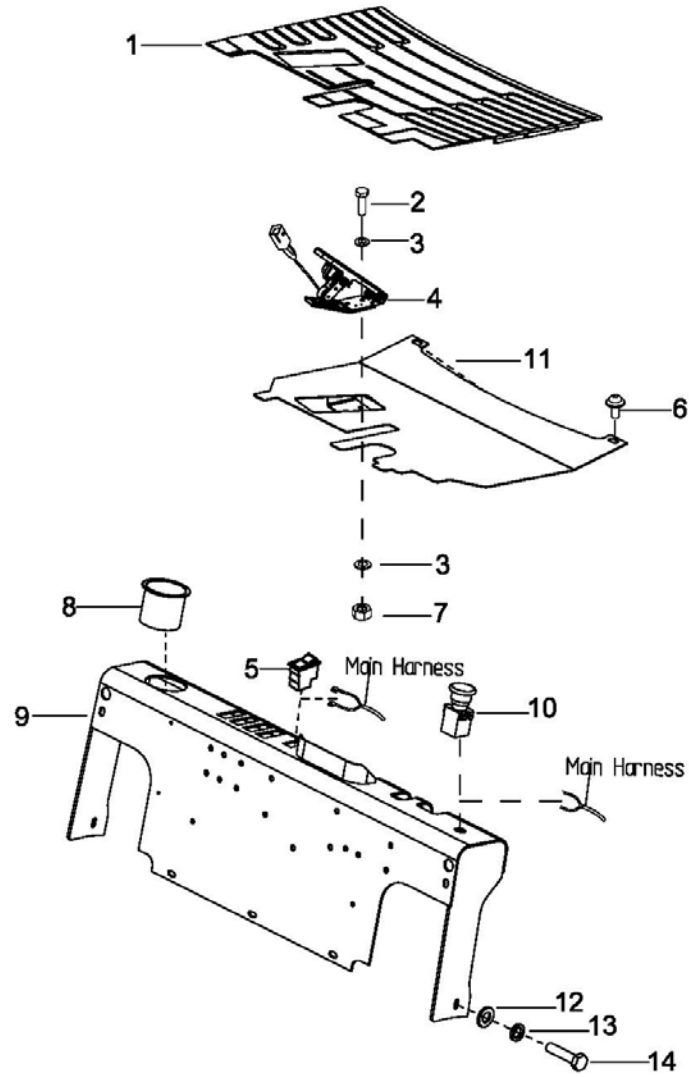
0102 Overhead Guard



0102 Overhead Guard

Index	Part No.	Part Name	No.	Applied Date	Remark
1	303013000003	Nut M8	1		
2	304003000005	Lockwasher ø8	3		
3	304002000005	Flatwasher ø8	3		
4	3125-122000-00-01	Viewfinder	1		
5	3125-600300-00	Head lamp	2		
6	301016000001	Bolt M8*55	4		
7	3125-600400-00	Front combination lamp	2		
8	7331-527000-00	Lamp Block R	1		
9	304000000040	Flatwasher ø8	4		
10	304000000052	Lockwasher ø8	4		
11	303001000005	Nut M8	4		
12	3218-600400-00	Caution Switch	1		
13	3525-680003-00	LED light	2		
14	7331-526000-00	Lamp Block L	1		
15	7331-801400-00	Rear wiring harness	1		
16	7331-801200-00	Overhead guard harness L	1		
17	7331-801300-00	Overhead guard harness R	1		
18	7830-20002W-00	Bracket	1		
19	301002000013	Bolt M8*16	2		
20	7330-582002-00	Glass roof	1		For EFL251、 ICE251

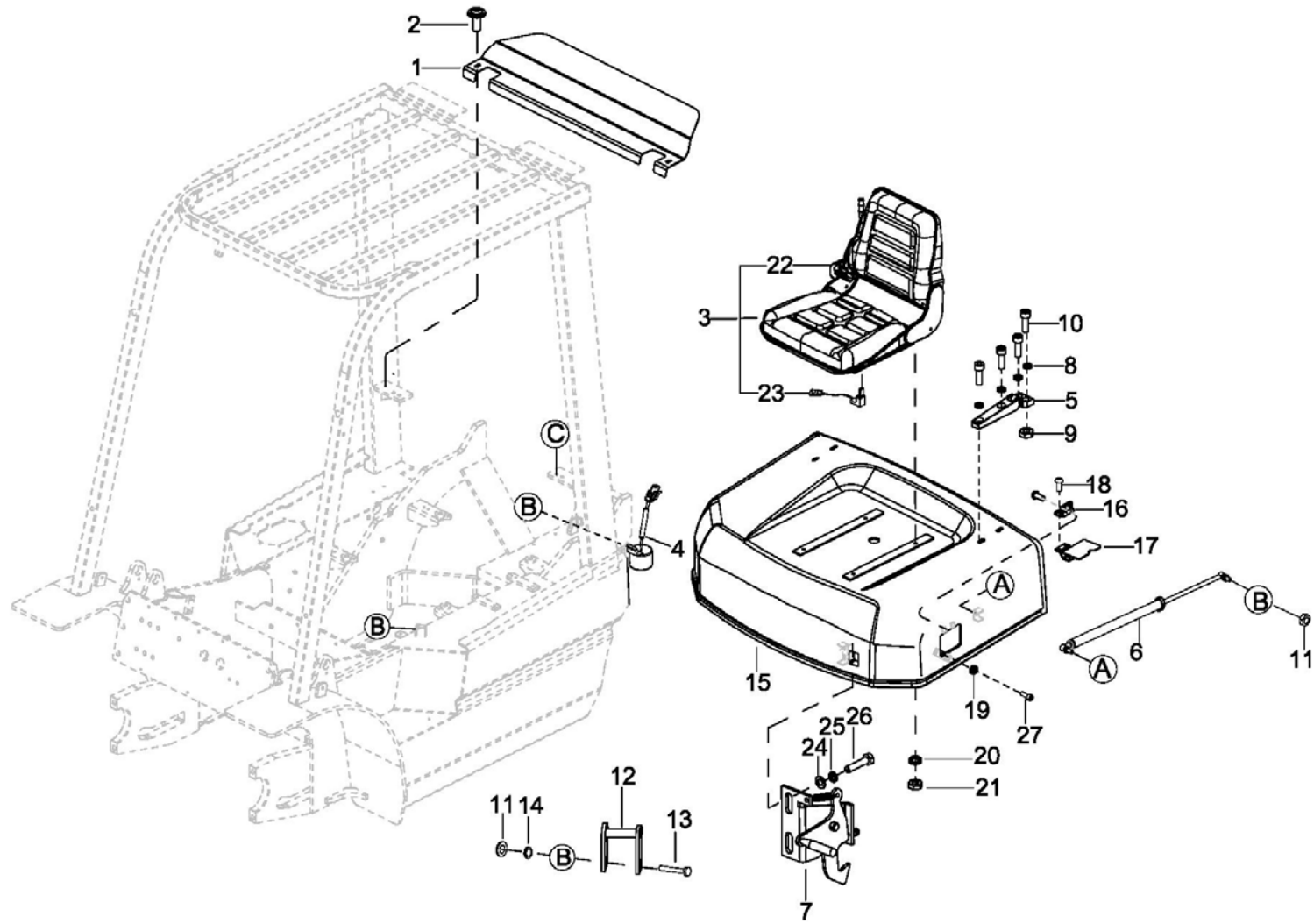
0103 Front Cover



0103 Front Cover

Index	Part No.	Part Name	No.	Applied Date	Remark
1	3132-500001-00	Cushion	1		
2	301000000372	Bolt M8*20	2		
3	304000000105	Flat washer ø8	4		
4	3218-680000-10	Accelerator	1		
5	3218-606000-00	Warning Light Switch	1		
6	302000000189	Screw M8*16	4		
7	303022000004	Nut M8	2		
8	7331-550004-00	Box	1		
8	3218-600007-50	Meter	1		For EFL252、ICE251,
9	3132-113000-0A	Dashboard	1		ICE251B
9	3132-113000-C0	Dashboard	1		For EFL252、ICE251,
10	3218-604000-00	Emergency Stop Switch	1		
11	3132-240000-0A	Floor Plate	1		
12	304000000119	Flat washer ø10	2		
13	304000000053	Lock washer ø10	2		
14	301000000209	Bolt M10*25	2		

0104 Back Cover



0104 Back Cover

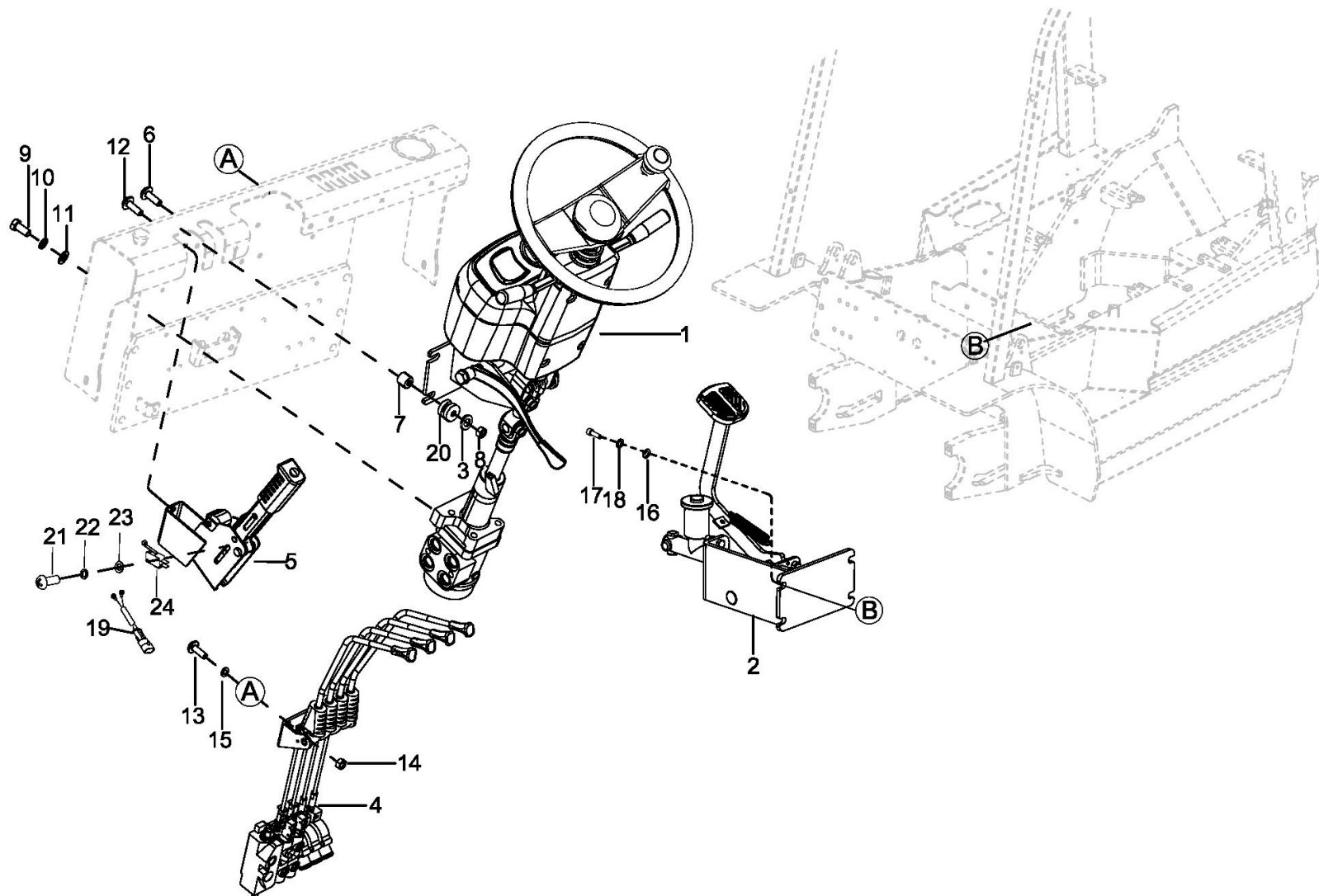
Index	Part No.	Part Name	No.	Applied Date	Remark
1	7331-500026-00	Cover	1		
2	302000000189	Screw M18*16	2		
3	3132-212000-00	Seat	1		
4	3218-600700-00	Alarm Buzzer	1		
5	7331-560012-00	Hinge Assembly	2		
6	7331-500016-00	Gas Spring	1		
7	3113-360000-00	Lock assembly	1		
8	304000000119	Flat washer ø10	4		
9	304000000053	Lock washer ø10	4		
10	302000000427	Screw M10*30	8		
11	303022000004	Nut M8	2		
12	7331-500300-00	Bracket	1		
13	301001000012	Screw M8*45	1		
14	304000000040	Plain washer ø8	1		
15	3127-211000-00	Cover	1		
16	3113-222000-00	Hinge	1		
17	3132-121000-00	Charge cover	1		
18	302002000024	Screw M6×10	4		
19	1118-650010-60	Magnet	1		
20	302000000427	Screw M10*30	8		
21	304000000118	Flat washer ø8	4		
22	3132-212001-00	Seat belt	1		
23	3132-212002-00	Seat Switch	1		
24	304000000040	Flat washer ø8	2		

0104 Back Cover

Index	Part No.	Part Name	No.	Applied Date	Remark
25	304000000052	Lock washer ø8	2		
26	301002000013	Bolt M8*16	2		
27	302001000115	Screw M4*12	1		
28	301016000004	Bolt M8*30	4		

2000
Steering Control System

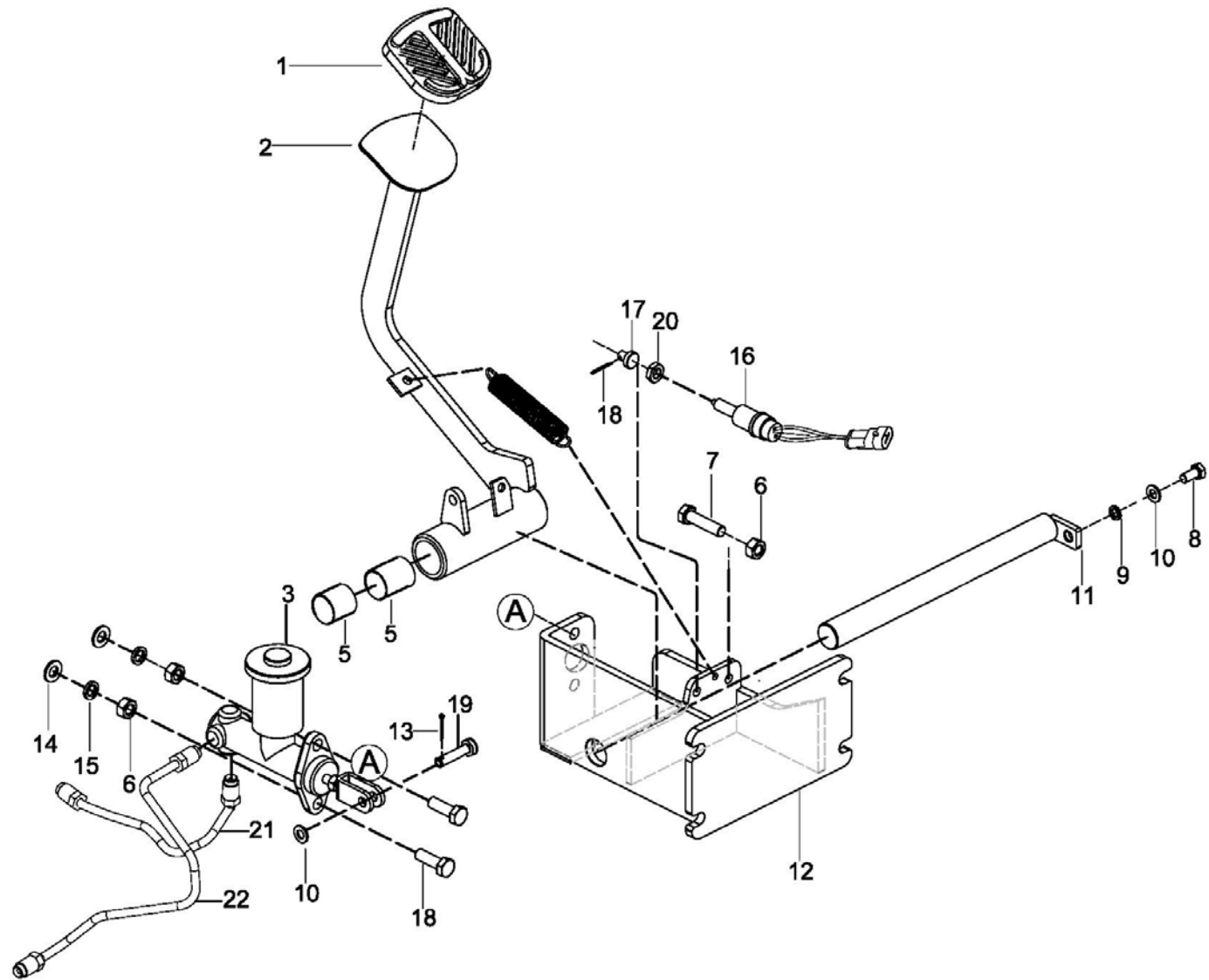
0201 Steering Control System



0201 Steering Control System

Index	Part No.	Part Name	No.	Applied Date	Remark
1	3132-410200-00	Steering Assembly	1		
2	3132-320000-00	Parking Brake Assembly	1		
3	304000000034	Flatwasher ø10	4		
4	3132-660002-00	Valve Control Linkage	1		
5	3132-650010-00	Parking Lever Ass'y	1		
6	301000000334	Screw M10*40	4		
7	7331-410005-00	Locating bush	1		
8	303000000024	Nut M10	4		
9	301004000006	Bolt M12*1.25*25	2		
10	304000000051	Lockwasher ø12	2		
11	304000000041	Flatwasher ø12	2		
12	301000000333	Blot M10*30	2		
13	301016000002	Blot M10*25	4		
14	303022000004	Nut M8	4		
15	304000000118	Flatwasher ø8	4		
16	304000000106	Flatwasher ø10	4		
17	301000000099	Blot M10*25	4		
18	304000000053	Lockwasher ø10	4		
19	3525-635000-00	Switch Harness	1		
20	7331-410007-00	Rubber meter	4		
21	302008000001	Screw M3*25	2		
22	304003000001	Lockwasher ø3	2		
23	304002000001	Flatwasher ø3	2		
24	3132-605000-00	Micro-switch	1		

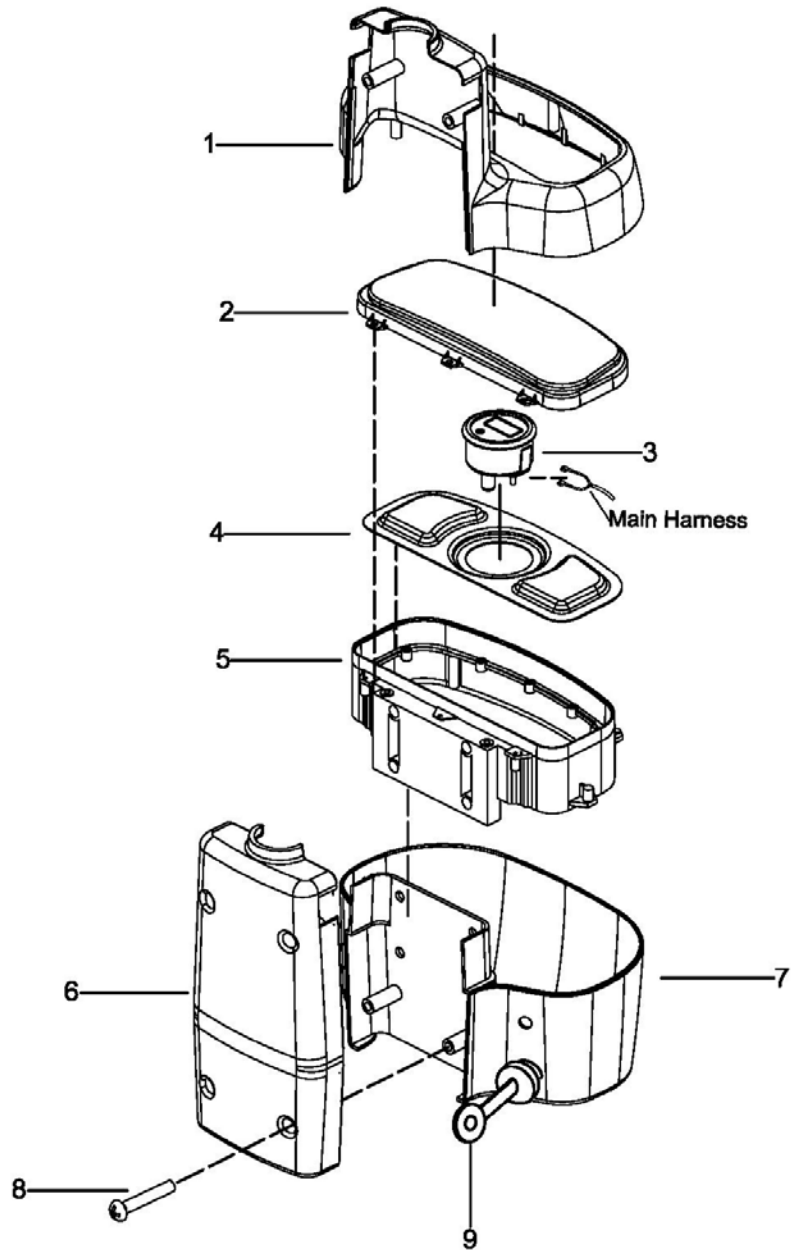
0202 Parking Brake



0202 Parking Brake

Index	Part No.	Part Name	No.	Applied Date	Remark
1	7331-610033-00	Foot Brake Pedal	1		
2	7331-610007-00	Right Pedal Support Assembly	1		
3	7331-610022-00	Brake Pump Assembly	1		
4	7331-610032-00	Pull Spring	1		
5	202800000171	Foot Brake Sleeve	2		
6	303001000006	Nut M10	3		
7	301002000030	Bolts M10*40	1		
8	304003000006	Hexagon Head Bolt Full Thread M8*16	1		
9	304003000005	Spring Washerø8	1		
10	304002000005	Flat Washer ø8	2		
11	7331-610025-00	Shaft Assembly	1		
12	3132-321000-00	Foot Brake Solder	1		
13	301002000028	Blot M10*30	2		
14	304007000003	Flat Washer ø10	2		
15	304003000006	Spring Washer ø10	2		
16	7331-800100-00	Brake Light Switch	1		
17	7331-610029-00	Cushion	1		
18	307001000002	Pin ø2×20	2		
19	307006000003	Pin Shaft ø8*25	1		
20	303000000017	Bolt M10	1		
21	3127-322000-00	Left pipe	1		
22	3127-321000-00	Right pipe	1		

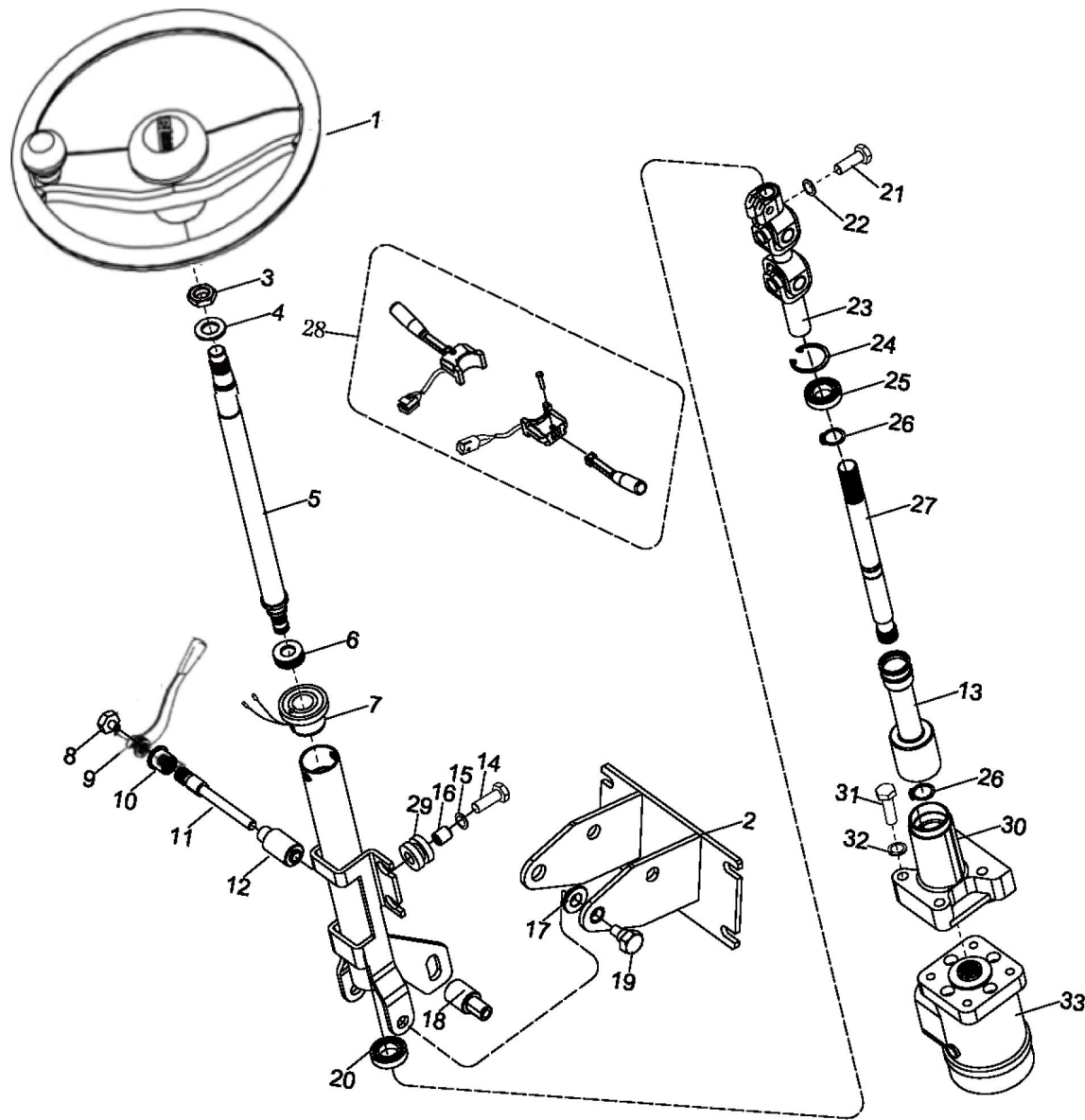
0203 Meter



0203 Meter

Index	Part No.	Part Name	No.	Applied Date	Remark
1	3132-802011-00	Cover	1		
2	3132-802012-00	Cover	1		
3	1155-520009-00	Electricity table	1		ICE251B,
4	3132-100001-00	Bracket	1		ICE251B
4	3132-100001-10	Bracket	1		For EFL252、ICE251,
5	3132-802013-00	Cover	1		
6	3132-802014-00	Cover	1		
7	3132-802015-00	Cover	1		
8	302000000144	Bolt M4*35	1		
9	3112-603000-10	Key Switch	1		

0204 Steering Assembly



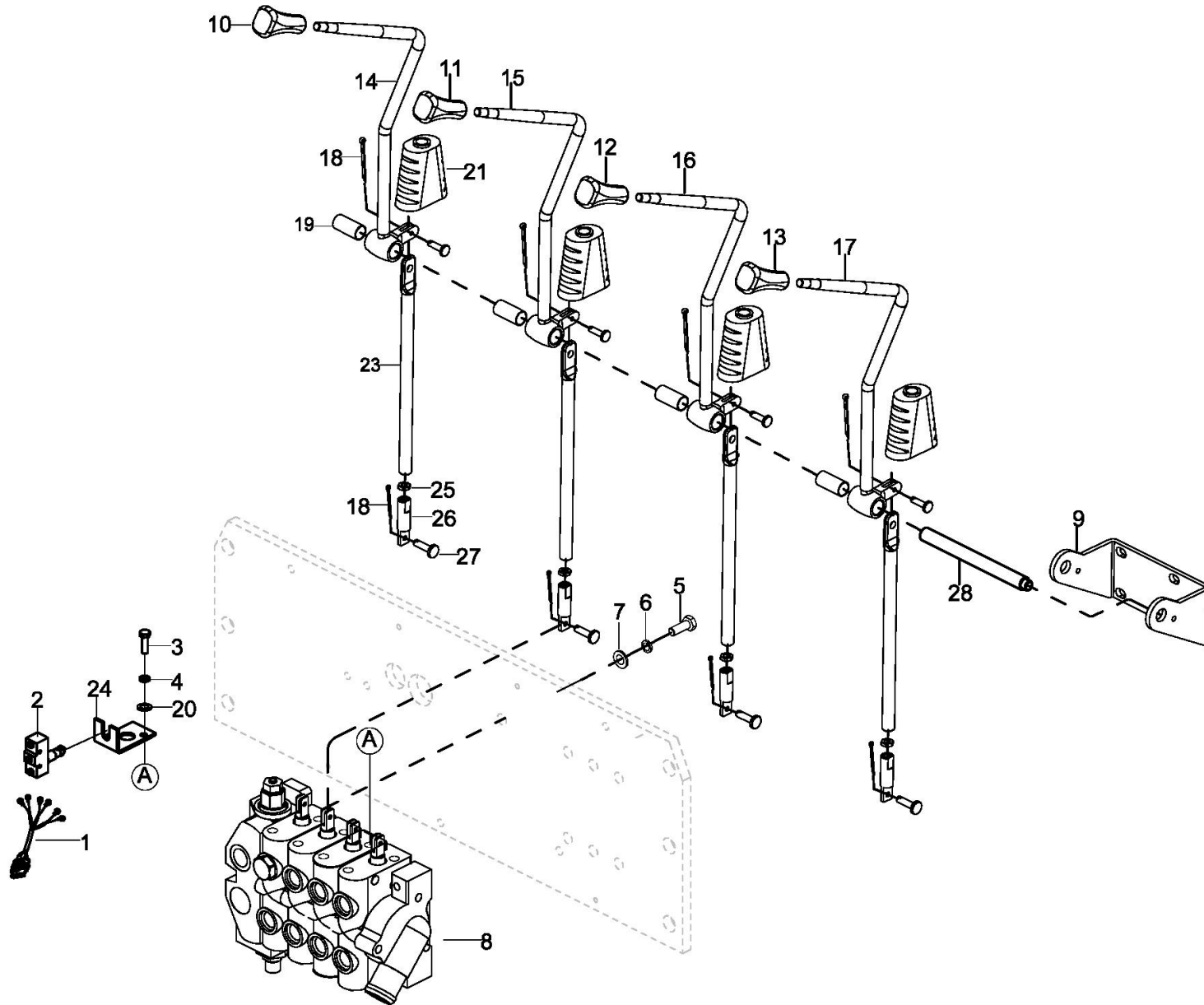
0204 Steering Assembly

Index	Part No.	Part Name	No.	Applied Date	Remark
1	3127-323000-00	Hand wheel assembly	1		
2	7331-410401-00	Bracket,hand wheel	1		
3	303003000002	Nut M16*1.5	1		
4	304000000044	Washer ø16	1		
5	7331-410201-00	Steering axle	1		
6	3132-410210-00	Sheath	1		
7	7331-410203-00	Upper bushing assembly	1		
8	7331-410001-00	Bolt	1		
9	7331-410300-00	Lock lever	1		
10	7331-410002-00	Lock axle	1		
11	302000000319	Screw M5*10	1		
12	7331-410004-00	Lock bushing	1		
13	7331-410009-00	Jacket	1		
14	301002000008	Bolt M6*35	4		
15	304000000061	Washer ø6	4		
16	7331-410011-00	Steering column cover	4		
17	7331-410008-00	Nylon gasket	2		
18	7331-410214-00	Lock bushing	1		
19	7331-410006-00	Upper bolt	2		
20	309001000009	Bearing	1		
21	301000000096	Bolt M8*35	1		
22	304000000108	Washer lock ø8	1		
23	7331-410230-00	Knuckle	1		
24	3132-41021X-00	Snap ring ø37	1		

0204 Steering Assembly

Index	Part No.	Part Name	No.	Applied Date	Remark
25	309001000009	Bearing	1		
26	305001000012	Snap ring ø20	3		
27	7331-410502-00	Connecting axle	1		
28	3132-600900-00	Combined switch	1		
29	7331-410012-00	Gasket,rubber	4		
30	7331-410500-00	Flange	1		
31	301000000084	Bolt M10*45	4		
32	304000000053	Washer ø10	4		
33	3132-730000-00	Steering unit	1		

0205 Valve Control Linkage



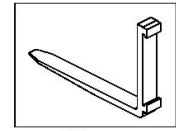
0205 Valve Control Linkage

Index	Part No.	Part Name	No.	Applied Date	Remark
1	3218-628000-00	Switch Harness	1		For Two-way control valve
1	3218-627000-00	Switch Harness	1		For Three-way control valve
1	3218-629000-00	Switch Harness	1		For Four-way control valve
2	3218-605000-00	Switch	3		
3	301000000090	Bolt M6*16	4		
4	304000000050	Lock washer ø6	4		
5	301004000059	Bolt M10*1.25*40	3		
6	304000000053	Lockwasher ø10	3		
7	304000000035	Flatwasher ø10	3		
8	3132-740000-00	Control Valve Assembly,2-spool	1		For Two-way control valve
8	3132-740010-00	Control Valve Assembly,3-spool	1		For Three-way control valve
8	3132-740020-00	Control Valve Assembly,4-spool	1		For Four-way control valve
9	7331-641002-00	Bracket 2	1		For Two-way control valve
9	7331-641003-00	Bracket 3	1		For Three-way control valve
9	7331-641004-00	Bracket 4	1		For Four-way control valve
10	3218-330006-00	Handle	1		
11	3218-330007-00	Handle	1		
12	3218-330008-00	Handle	1		
13	3218-330009-00	Handle	1		
14	7331-640009-02	Control Lever,Lifting	1		
15	7331-640000-02	Control Lever,Tilt	1		
16	7331-640001-03	Control Lever,Sway	1		Option
17	7331-640001-04	Control Lever,Attachment	1.		Option
18	307001000002	Pin ø2*20	Req.		
19	7331-64001X-00	Collar	Req.		

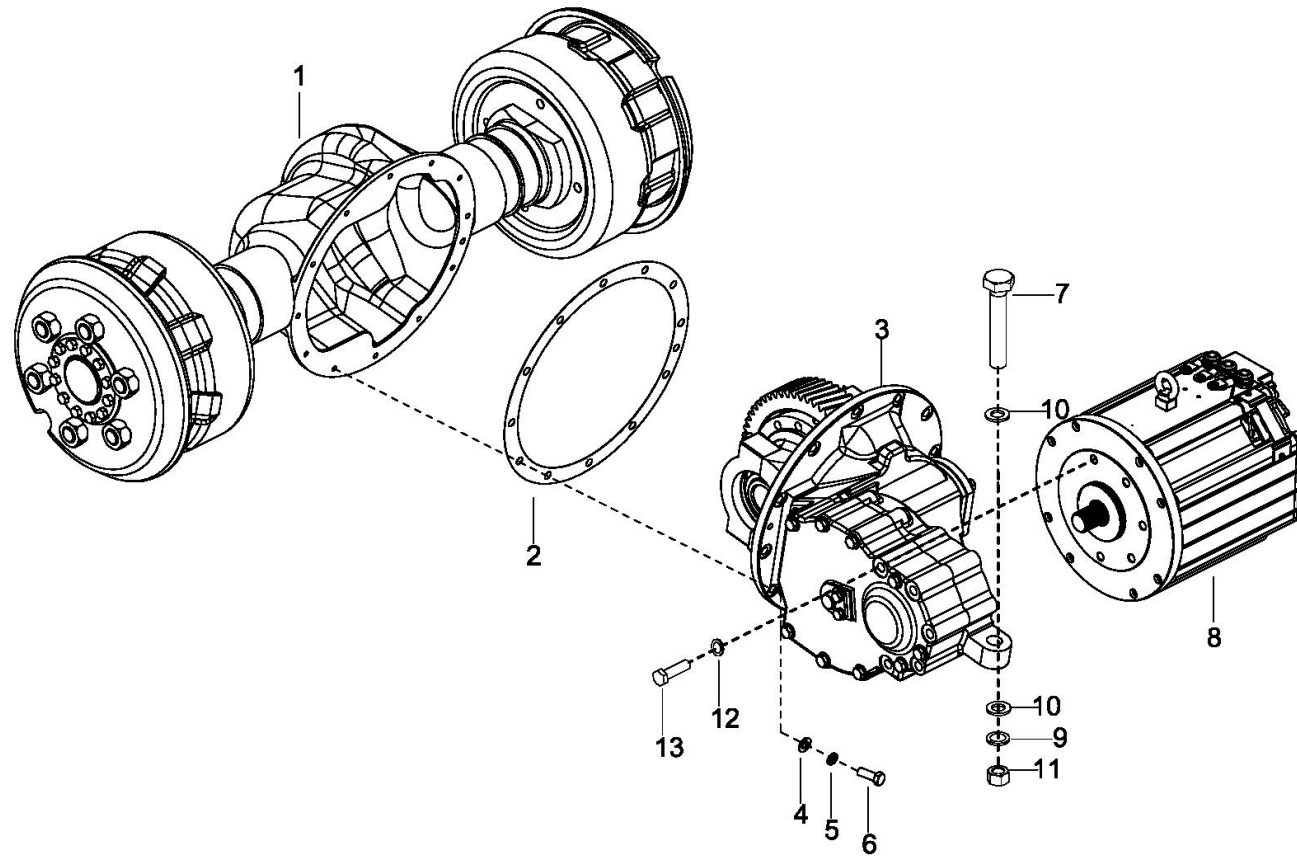
20	304000000036	Flat washer ø6	4		
21	7331-642001-00	Dirt-proof boot	Req.		
22	307006000001	Pin Shaft	Req.		
23	7331-640004-02	Rod-Control Valve	Req.		
24	3525-338001-00	Bracket	Req.		
25	303000000046	Nut	Req.		
26	7331-640003-02	Joint	Req.		
27	307006000001	Pin ø4.7*18	Req.		
28	7331-640006-02	Connecting rod	1		For Two-way control valve
28	7331-640006-03	Connecting rod	1		For Three-way control valve
28	7331-640006-04	Connecting rod	1		For Four-way control valve

3000
Driving System

0301 Driving System



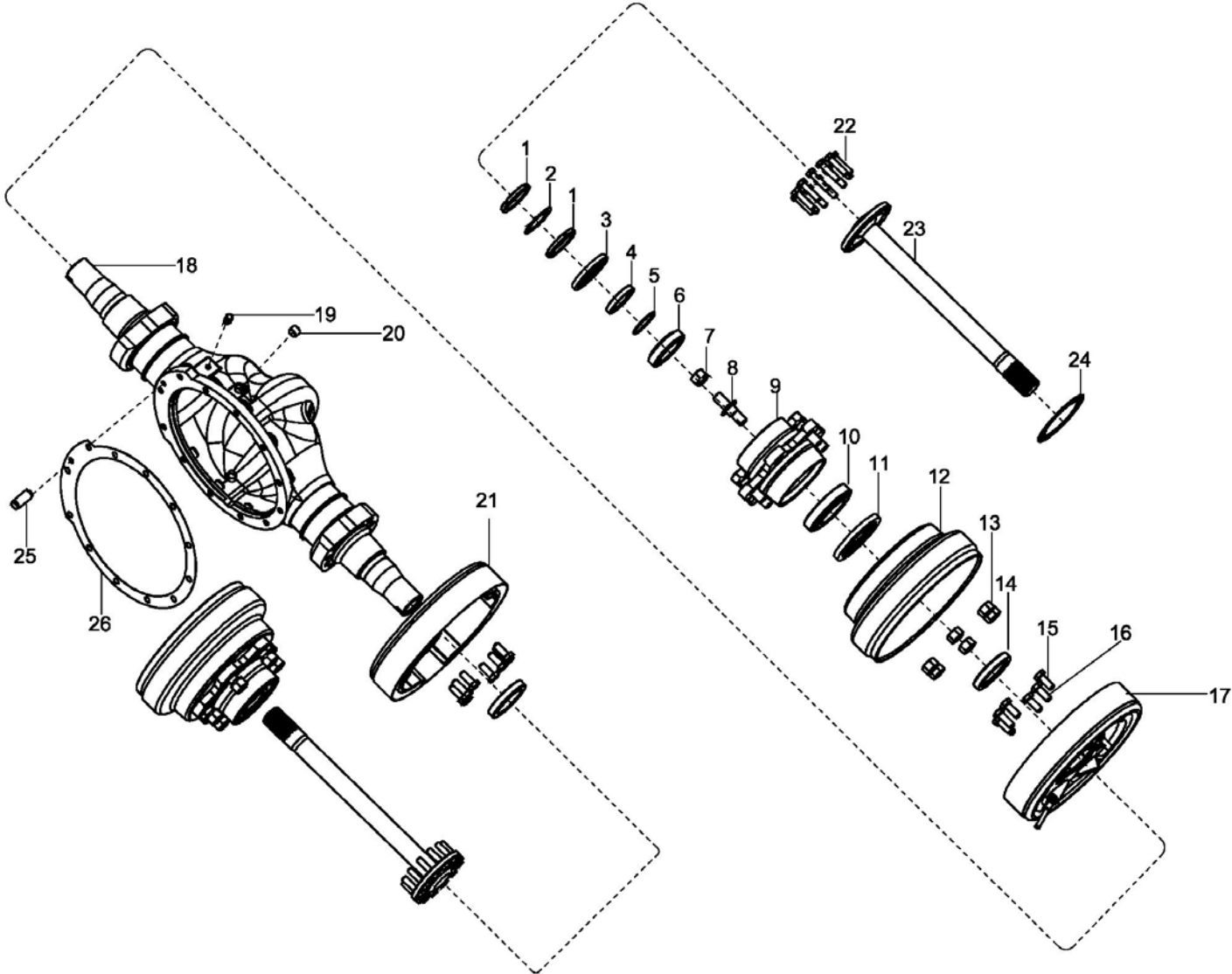
View



0301 Driving System

Index	Part No.	Part Name	No.	Applied Date	Remark
1	3127-410000-00	Drive axle ass'y	1		
2	3525-400003-00	Gasket	1		
3	3902-430000-00	Gearbox ass'y	1		
4	304000000041	Plain washer ø12	12		
5	304000000051	Lock washer ø12	12		
6	301004000008	Bolt M12*35	12		
7	301000000389	Bolt M20*100	1		
8	3132-650000-10	Traction Motor	1		
9	304000000057	Lock washer ø20	1		
10	304000000045	Washer	2		
11	303000000160	Nut M20	1		
12	304000000054	Lock washer ø14	5		
13	301003000012	Bolt M14*1.5*180	5		

0302 Drive axle assembly



0302 Drive axle assembly

Index	Part No.	Part Name	No.	Applied Date	Remark
1	7830-20114X-S0	Nut M60*2*10	4		
2	7830-20115X-S0	Washer ø60	2		
3	3112-410008-00	Seal FB75*100*10	2		
4	7830-20101X-S0	Snap Ring60*75*12	2		
5	7830-20116X-S0	O-Ring d60*3,55	2		
6	3112-41016X-00	Bearing 32012	2		
7	7825-20104X-S0	Nut M20*1.5	12		
8	7810-21206X-W0	Stud M20*1.5*85	12		
9	7825-20106X-S0	Hub	2		
10	7831-20119X-S0	30214	2		
11	7830-20121X-S0	Seal FB100*130*12	2		
12	7825-20107X-S0	Brake hub	2		
13	7845-20719X-S0	Nut M20*1.5	12		
14	7830-20108X-S0	Snap Ring 72*100*16	12		
15	3131-410019-00	Bolt M14*1.5*35	4		
16	3131-410006-00	Bolt M14*1.5*38(20)	1		
17	3127-41003X-00	Wheel Brake-L 1270	1		
18	3127-41004X-00	Housing	1		
19	3112-410003-00	Ventilatory plug	3		
20	7845-20723X-S0	Plug R1/2	1		
21	3127-41005X-00	Wheel Brake-R 1970	1		
22	7845-20711X-S0	Bolt M12*1.25*50(28)	24		
23	3127-41006X-00	Shaft	2		
24	7830-20111X-S0	Packing	2		

0302 Drive axle assembly

Index	Part No.	Part Name	No.	Applied Date	Remark
25	3127-41016X-00	Pin D10*24	1		
26	3127-41007X-00	Washer	1		

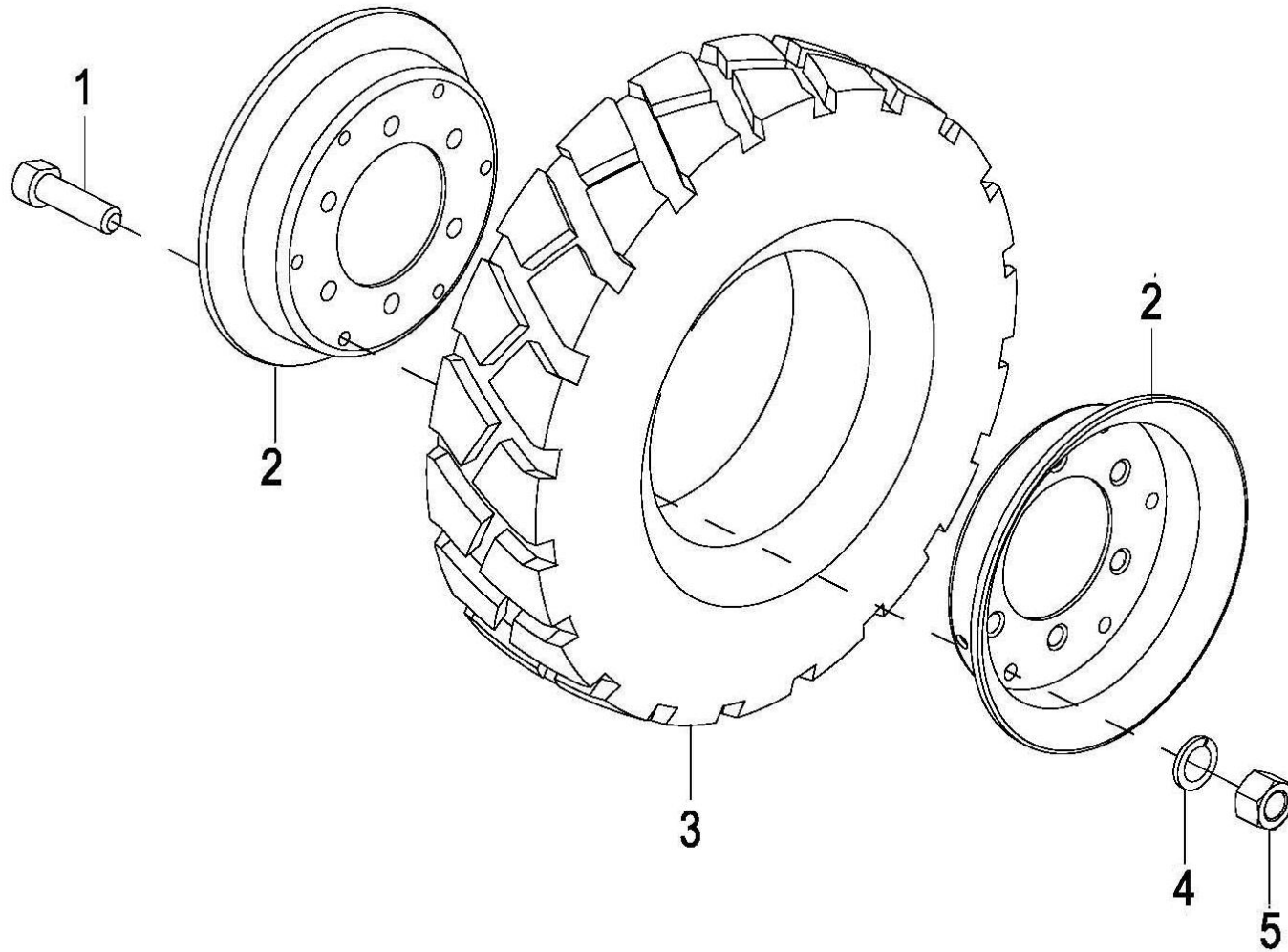
0303 Brake assembly

Index	Part No.	Part Name	No.	Applied Date	Remark
1	7825-20301X-S0	Pedestal,left brake	1		
1	7825-20401X-S0	Pedestal,right brake	1		
2	3127-41017X-00	Friction ass' y	4		
3	3131-411003-00	Rubber plug	4		
4	7825-20304X-S0	Left adjust lever	1		
4	7825-20404X-S0	Right adjust lever	1		
5	7825-20305X-S0	Spring,lower	2		
6	7825-20306X-S0	Left slack adjuster	1		
6	7825-20406X-S0	Right slack adjuster	1		
7	7825-20307X-S0	Pull rod	8		
8	7825-20308X-S0	Support	2		
9	7825-20309X-S0	Spring	8		
10	7825-20310X-S0	Cap	8		
11	7825-20311X-S0	Spring	2		
12	7825-20312X-S0	Rod	2		
13	7825-20313X-S0	Support	6		
14	7825-20314X-S0	Spring	4		
15	7825-20315X-S0	Pin	2		
16	7825-20316X-S0	Gasket	2		
17	7825-20317X-S0	Left brake rod	1		
17	7825-20417X-S0	Right brake rod	1		
18	7825-20318X-S0	Plate	2		
19	7825-20319X-S0	Left brake pump	1		
19	7825-20419X-S0	Right brake pump	1		
20	7825-20320X-S0	Hand brake rod	2		

0303 Brake assembly

Index	Part No.	Part Name	No.	Applied Date	Remark
21	7825-20321X-S0	Spring	2		
22	7825-20322X-S0	Bolt M8*16	4		
23	7845-20832X-S0	Lock washer 8	4		
24	3131-412027-00	Handbrake rope	2		

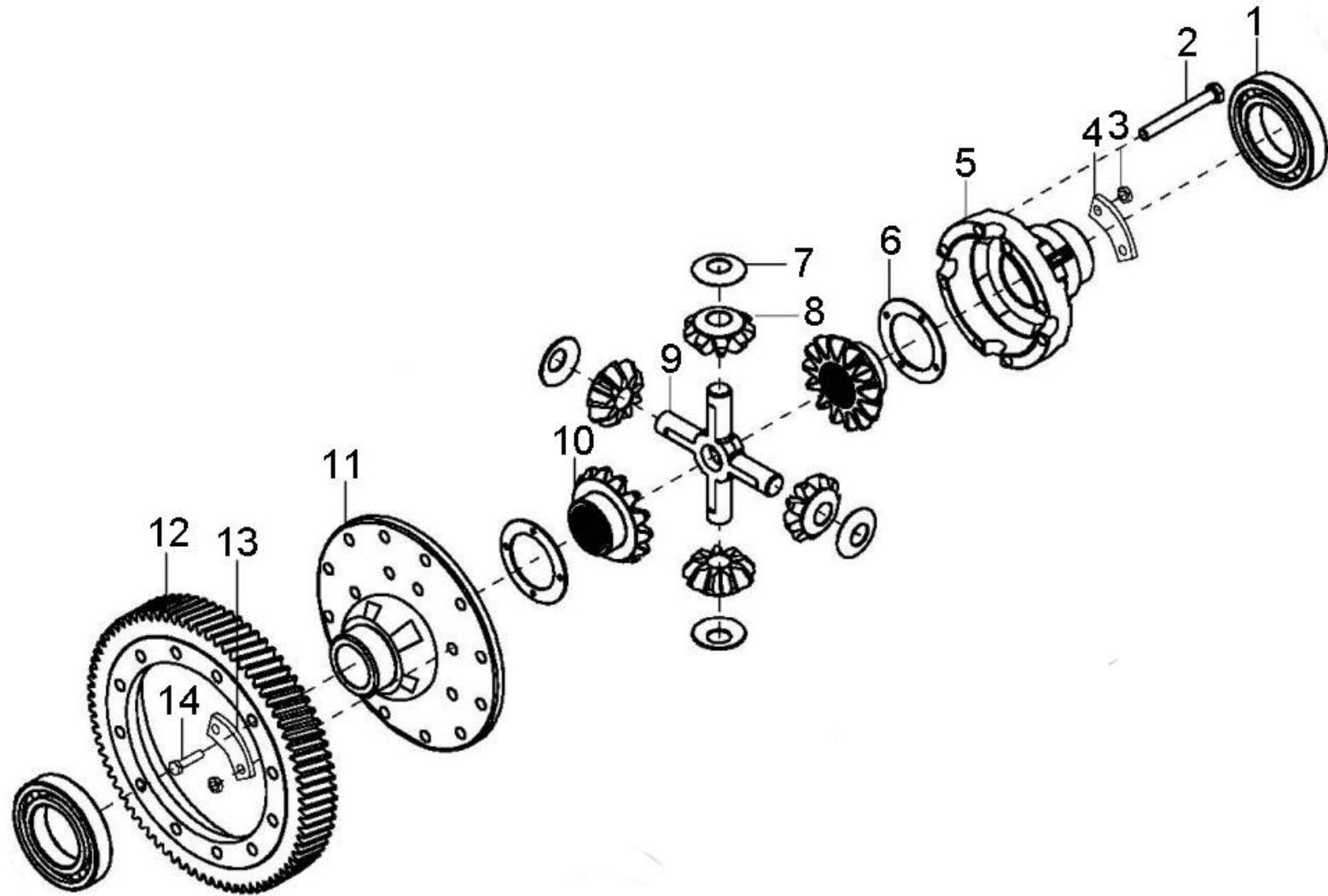
0304 Drive wheel



0304 Drive wheel

Index	Part No.	Part Name	No.	Applied Date	Remark
1	3525-430001-00	Bolt	6		
2	7825-213000-S0	Rim ass'y	1		
3	7820-280000-00-S0	Drive tyres	1		ICE251、ICE251B
3	3127-420000-10	Drive tyres	1		EFL252.
4	304000000055	Washer ø16	6		
5	303002000007	Nut M16*1.5	6		

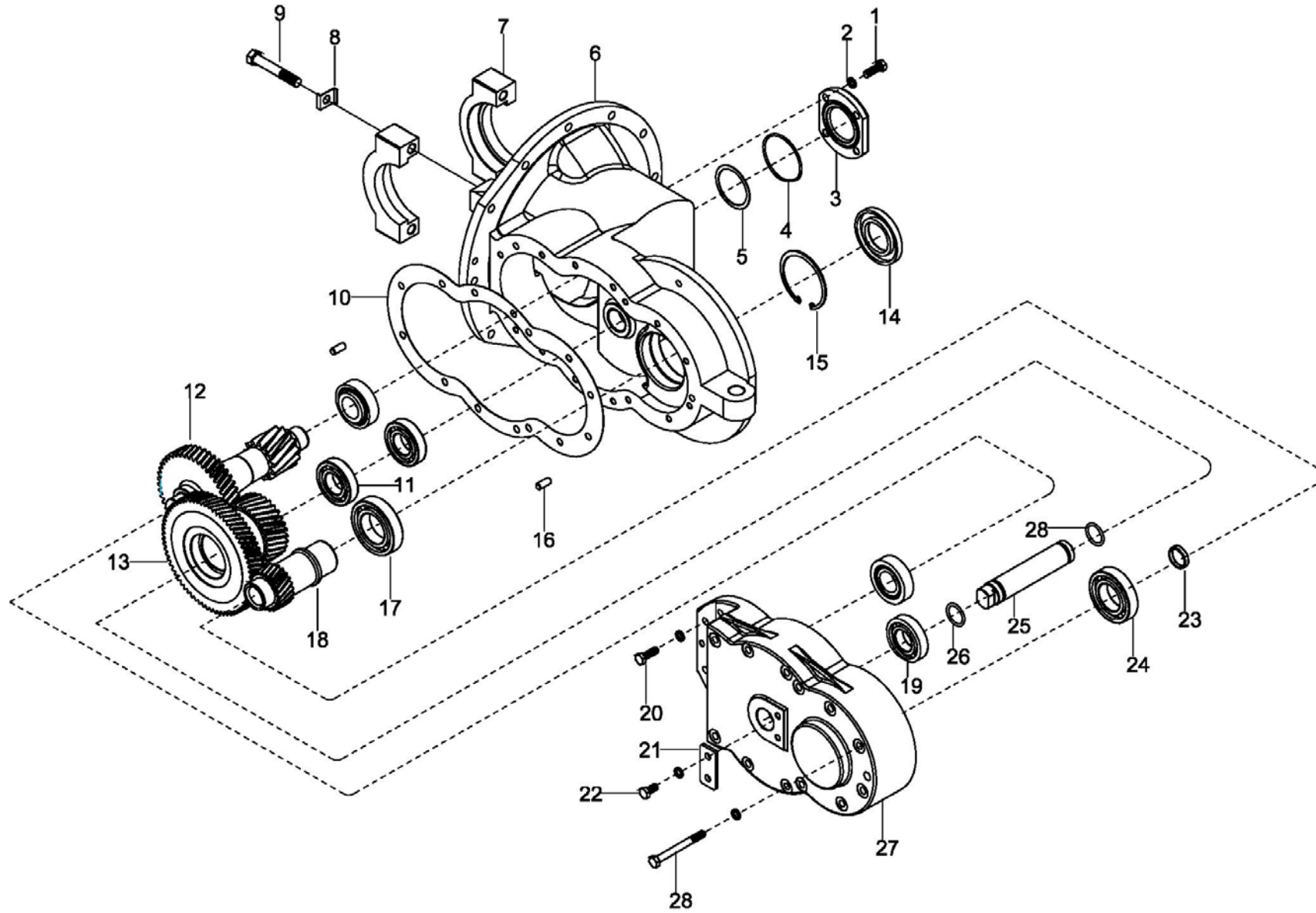
0305 Differential



0305 Differential

Index	Part No.	Part Name	No.	Applied Date	Remark
1	7402-403622-00	Bearing 6213	2		
2	3902-43017X-00	Bolt	12		
3	3115-411008-00	Nut M10×1.25	28		
4	7402-403613-00	Locking Plate	8		
5	7402-403601-00	Differential Cage	1		
6	7402-403607-00-01	Washer	2		
6	7402-403607-00-02	Washer	2		
6	7402-403607-00-03	Washer	2		
6	7402-403607-00-04	Washer	2		
6	7402-403607-00-05	Washer	2		
6	7402-403607-00-01	Washer	2		
7	7402-403616-00	Washer	4		
8	7402-403609-00	Planetary Gear	4		
9	7402-403608-00	Spider	1		
10	7402-403605-00-02	Face Gear	2		
11	7402-403601-00	Bolt	1		
12	3902-43018X-00	Gear	1		
13	7402-403615-00	Locking Plate	6		
14	7402-403614-00	Bolt	16		

0306 Gearbox assembly



0306 GEARBOX ASSY

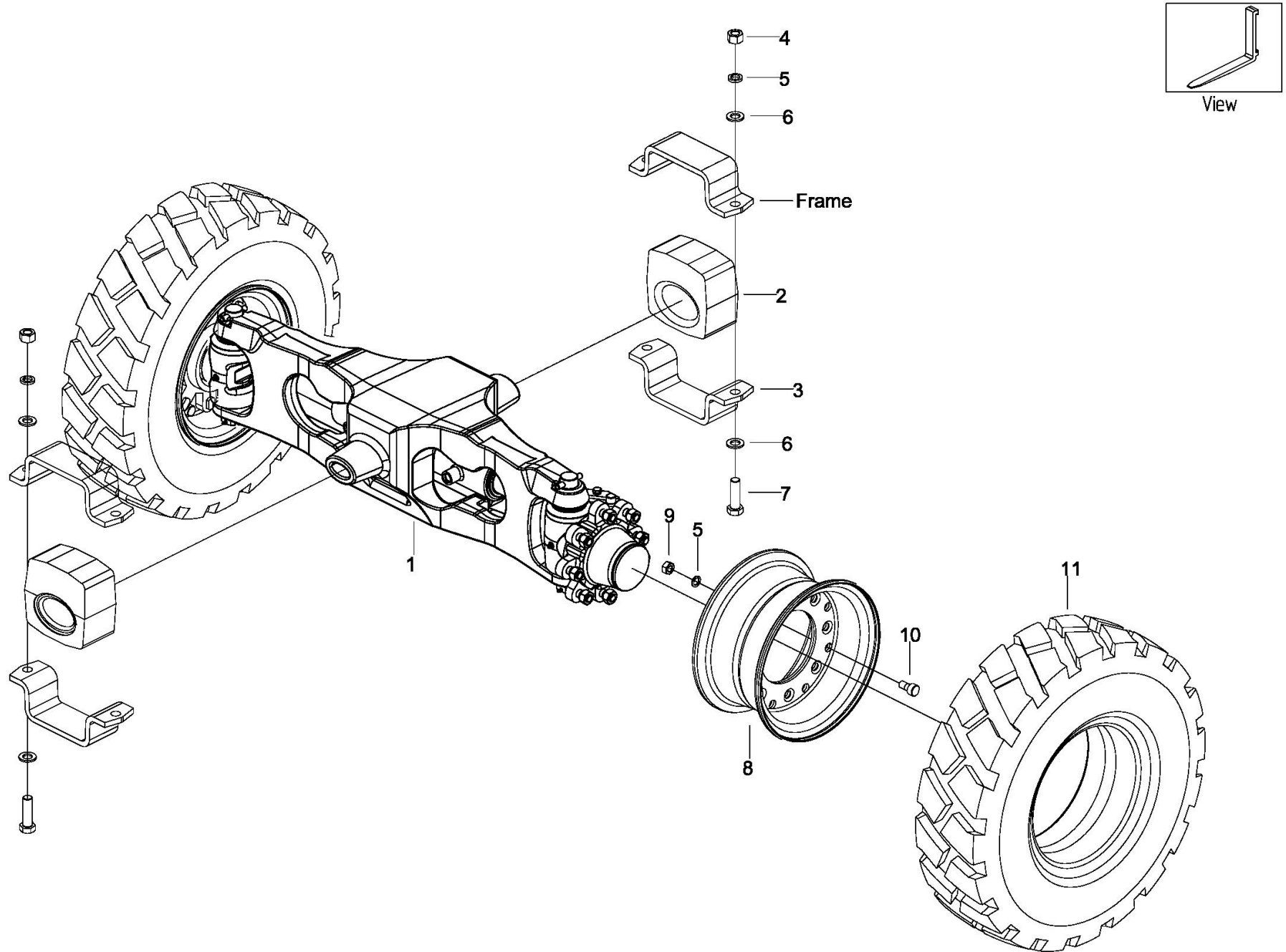
Index	Part No.	Part Name	No.	Applied Date	Remark
1	3115-41032X-00	Bolt M10*25	4		
2	7846-20108X-00	Lockwasher ø10	20		
3	7402-403604-00	Cap	1		
4	3115-41033X-00	O-Ring 75*3.1	1		
5	7402-403619-00-01	Washer	Req.		
5	7402-403619-00-02	Washer	Req.		
5	3902-43001X-00-01	Washer	Req.		
5	3902-43001X-00-02	Washer	Req.		
6	3902-43002X-00	Box Body	1		
7	3902-43003X-00	Bearing Housing	2		
8	7402-403002-00	Housing Lock	4		
9	7402-403001-00	Housing Bolt	4		
10	3902-43004X-00	Gaskets	1		
11	7402-403013-00	Bearing 6207	3		
12	3902-43005X-00	Tooth Shaft	1		
13	3902-43006X-00	Gear	1		
14	3902-43007X-00	Seal Ring 50*90*10	1		
15	3902-43008X-00	Snap Ring 90	1		
16	3902-43009X-00	Hinge Pin 10×24	2		
17	3902-43010X-00	Bearing 6210	1		
18	3902-43011X-00	Input Shaft	1		
19	7402-403620-00	Bolt M10*16	2		
20	3902-43012X-00	Bolt M10*35	2		
21	3901-44015X-00	Block	1		
22	3901-44014X-00	Bolt 10*16	2		

23	3902-43013X-00	Sealing Cap		1		
24	7846-20601X-00	Bearing 6209		1		
25	3901-44017X-00	Shaft		1		
26	3902-43014X-00	O-Ring 35*3.1		2		
27	3902-43015X-00	Box Cover		1		
28	3902-43016X-00	Bolt		12		

4000

Hydraulic System

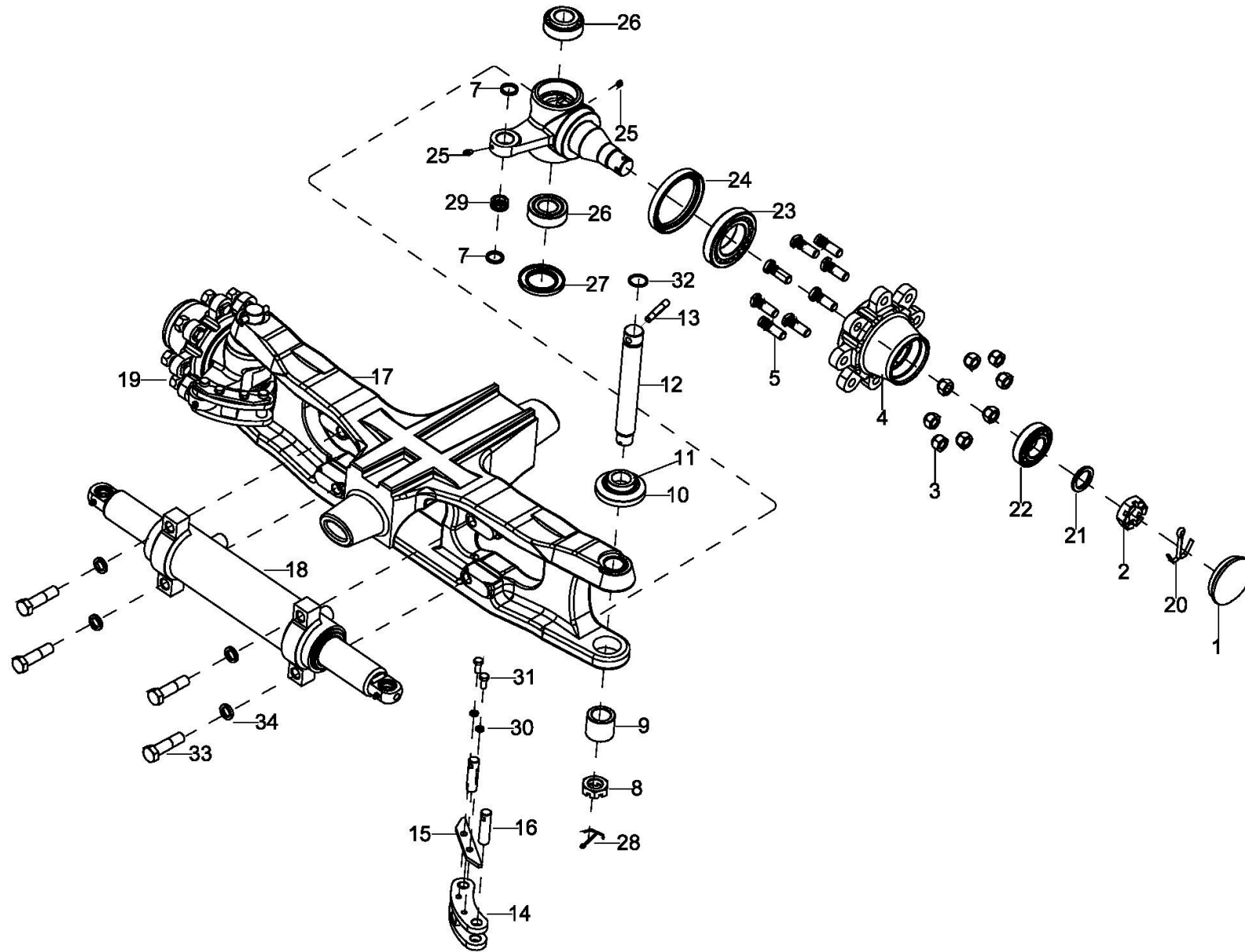
0401 Steering system



0401 Steering system

Index	Part No.	Part Name	No.	Applied Date	Remark
1	3127-510000-00	Steering axle assembly	1		
2	3127-51002X-00	Cushion	2		
3	3127-100002-00	Fix plate	2		
4	303001000009	Nut M16	4		
5	304000000051	Lock washer ø	20		
6	304000000044	Plain washer ø16	8		
7	301002000074	Bolt M16*55	4		
8	7825-214000-S0	Rim assembly rear	2		
9	303002000005	Nut M	16		
10	3525-520002-00	Bolt rim	16		
11	7820-280001-00-S0	Tyres	2		ICE251B、ICE251
11	3127-520000-10	Tyres	2		EFL252,

0402 STEERING AXLE



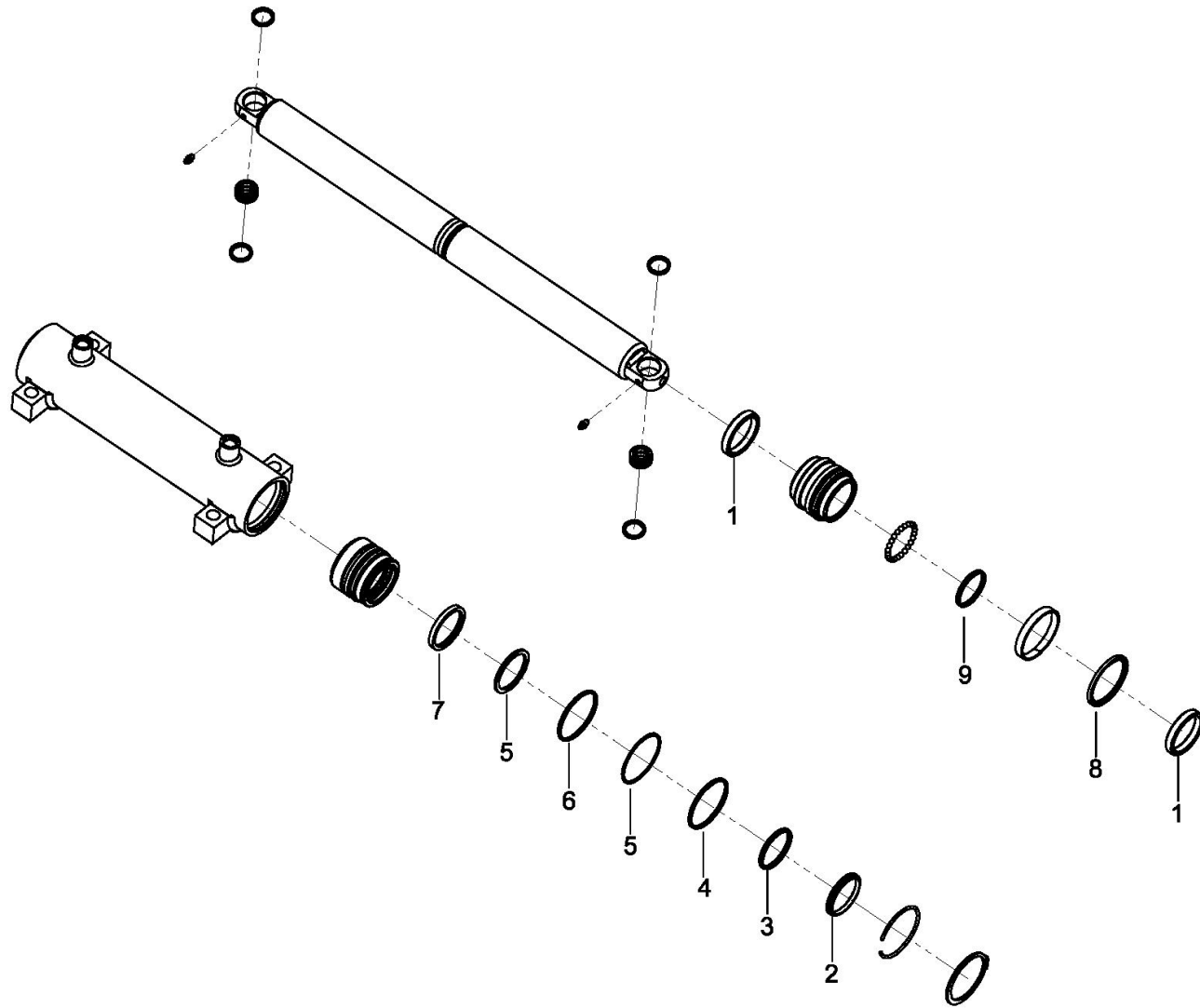
0402 STEERING AXLE

Index	Part No.	Part Name	No.	Applied Date	Remark
1	3530-510001-10	Hub cover	2		
2	3530-510023-10	Nut M30*2	2		
3	3530-510002-10	Nut	16		
4	7331-42007X-00	Hub M14*1.5	2		
5	3530-510003-10	BoltM14-1.5*4.2	16		
6	7331-42001X-01	Knuckle	1		
7	3530-510006-10	Thrust ring	4		
8	3530-510007-10	Nut	2		
9	7331-42002X-01	Sleeve 30*44*38	2		
10	7331-42003X-01	scraper seal	2		
11	3530-510017-10	Dustproof enclosure	2		
12	3530-510015-10	Master pin	2		
13	7331-42004X-01	Parallel pin	2		
14	7331-42023X-00	Connect rod	2		
15	3530-510013-10	Space plate	2		
16	3530-510014-10	Pin	4		
17	3127-51001X-00	Axle body	1		
18	7331-42006X-01	Steering cylinder	1		
19	7331-42007X-01	Steering knuckle ,L	1		
20	3530-510022-10	Cotter pin d6.3*80	2		
21	304000000015	Plain washer 30	2		
22	3530-510025-10	Bearing 30211	2		
23	309002000017	Bearing 30207	2		
24	7331-42010X-00	Sealing ring FB85*110*12	2		

0402 STEERING AXL

Index	Part No.	Part Name	No.	Applied Date	Remark
25	3115-52023X-10	Oil cup M6	4		
26	7331-42008X-01	Bearing 33026	4		
27	3530-510031-10	Sealing ring FB44*72*6	2		
28	3530-510032-10	Pin 3.4*40	2		
29	3530-510030-10	Bearing GE16ES	2		
30	3530-510038-10	Lock washer 8	4		
31	7810-41039X-W0	Bolt 8*18	4		
32	7331-42009X-01	O-ring d25*2.65	2		
33	7331-42010X-01	Bolit M16*1.5*62(25)-10.9	4		
34	7845-41021X-S0	Lock washer 16	4		

0403 STEERING CYLINDER



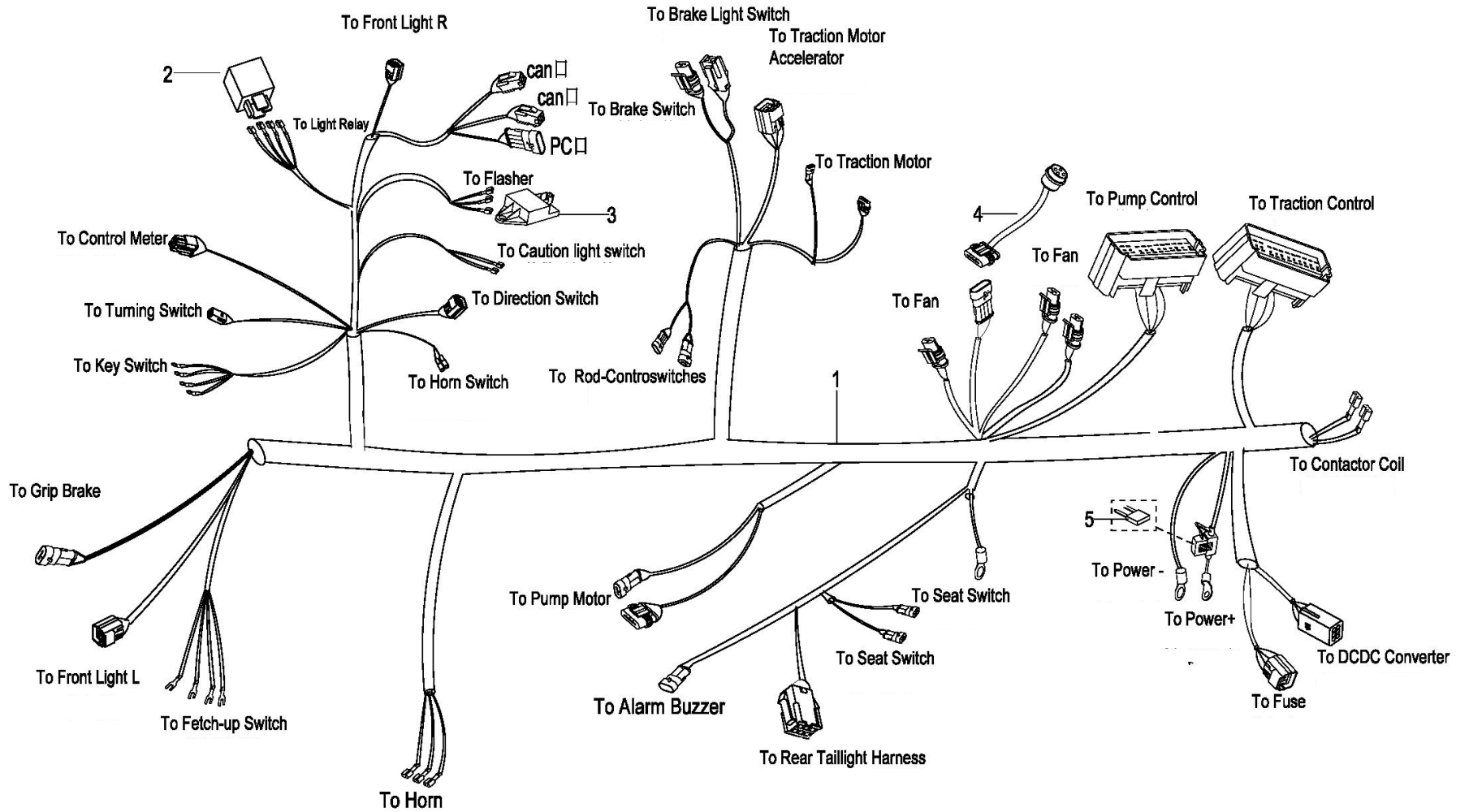
0403 STEERING CYLINDER

Index	Part No.	Part Name	No.	Applied Date	Remark
1	/	Packet 50*60*10	2		
2	/	Ring 50*58*5.8/8	2		
3	/	O-ring d50*3.55	2		
4	/	O-ring D70*3.1	4		
5	/	Thrust ring 70*65*1.5	2		
6	/	Thrust ring 60*50*3A	2		
7	/	Sealing ring 50*60*6	2		
8	/	Sealing ring 70*59*4.2	1		
9	/	O-ring d43.7*3.55	1		
10	3132-ZXG-0A	Seal kit for Steering cylinder	1		Include all above(1、 2、 3、 4、 5、 6、 7、 8、 9)

5000

Electrical System

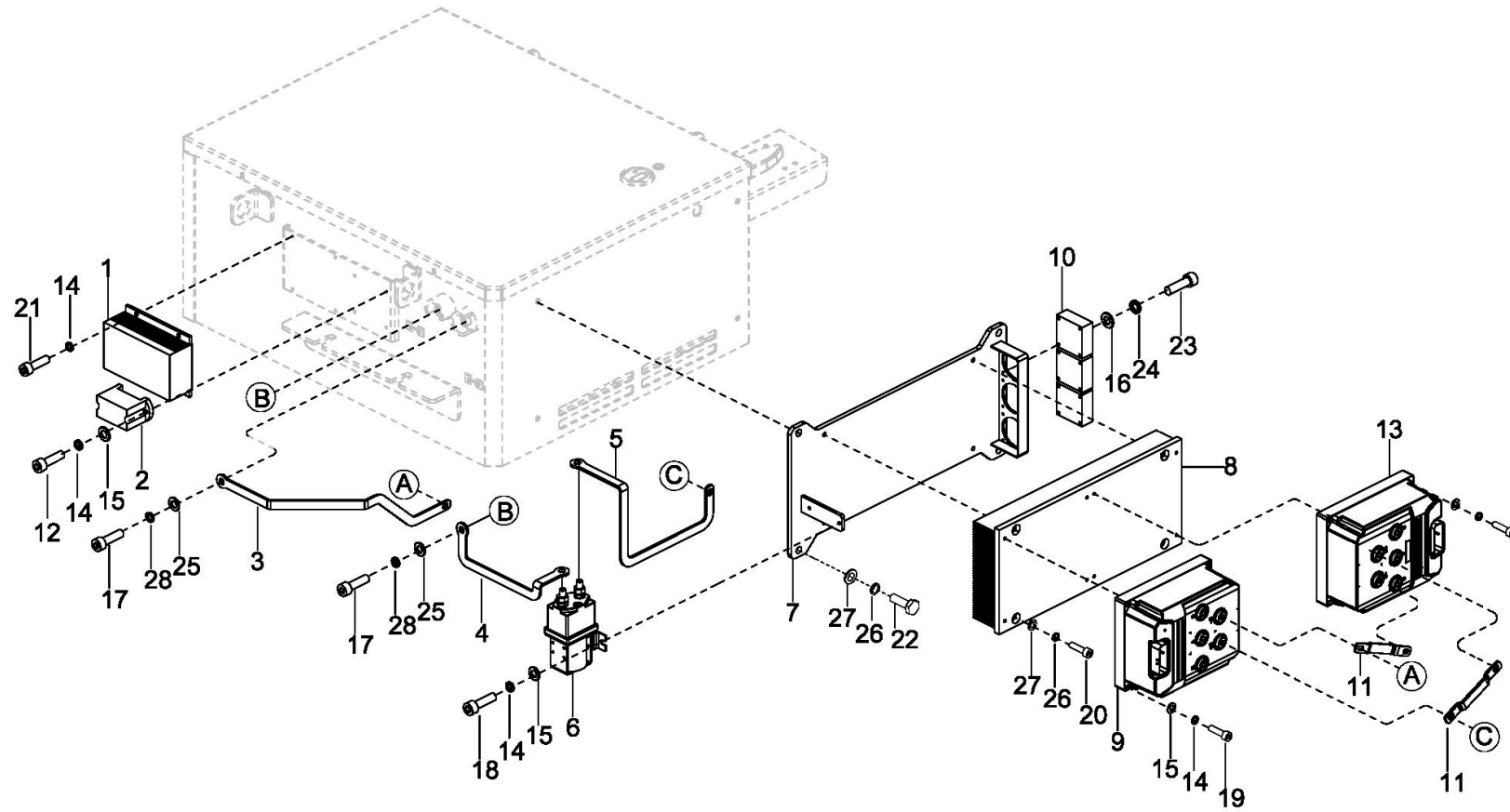
0501 HARNESS



0501 HARNESS

Index		Part No.	Part Name	No.	Applied Date	Remark
1		3127-610001-10	Master Wire Harness	1		ICE251B,
1		3127-610001-A0	Master Wire Harness	1		EFL252、ICE251,
2		3525-684000-00	Light Relay	1		
3		3218-600600-10	Flasher	1		
4		3628-650004-00	Signal wire	1		
5		4105-620007-00	Fuse 10A	1		

0502 Control Bracket Assembly (ICE251B)



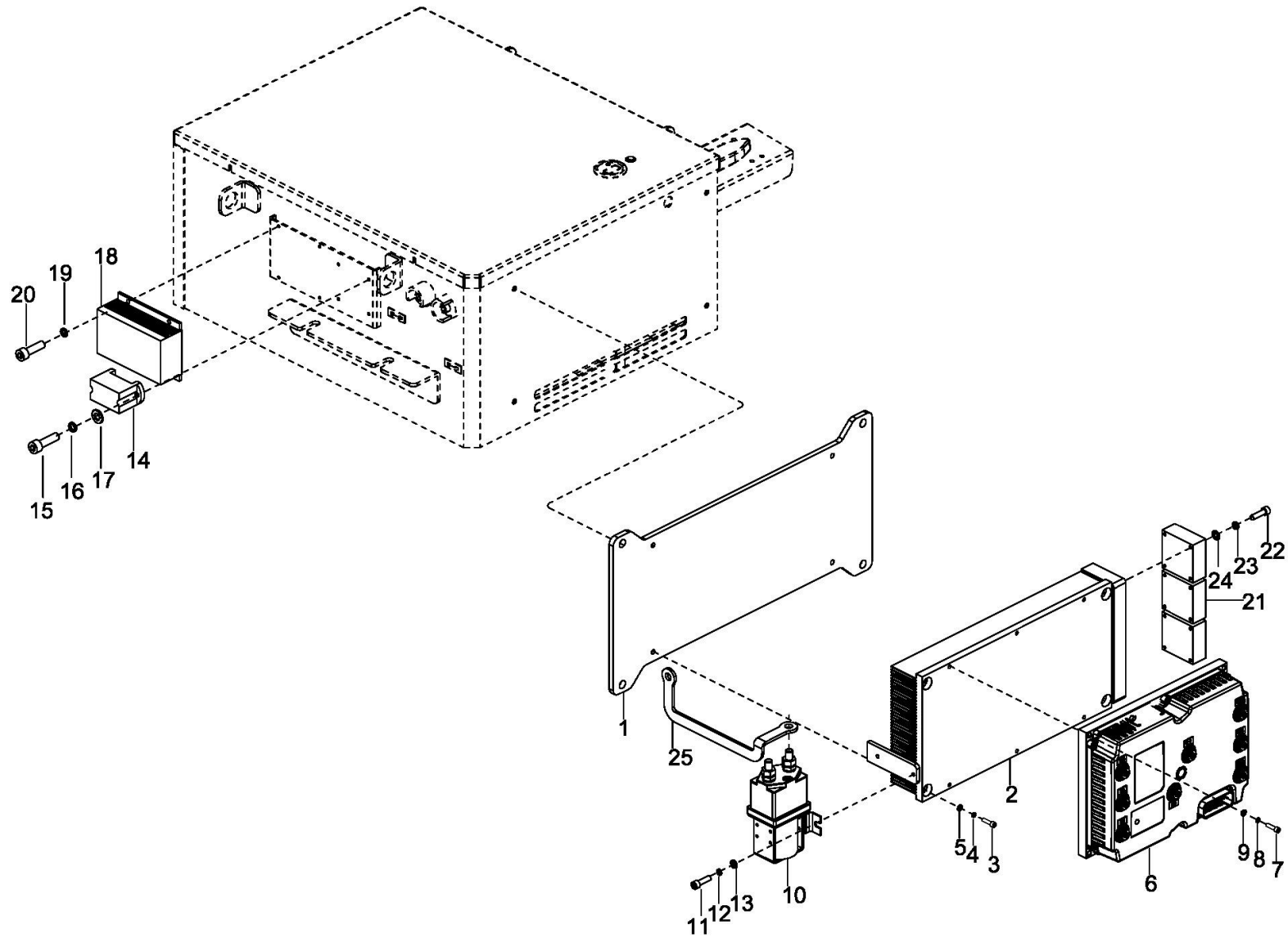
0502 Control Bracket Assembly(ICE251B)

Index	Part No.	Part Name	No.	Applied Date	Remark
1	3530-642000-00	DC-DC Converter	1		
2	3132-642000-00	Fuse Harness	1		
3	3127-640004-10	Copper bar -	1		
4	3132-640004-0A	Copper bar +	1		
5	3127-640003-10	Copper bar +	1		
6	3218-634000-10	Contactora	1		
7	3127-641000-10	Control Bracket	1		
8	3127-640001-10	Aluminum plate	1		
9	3127-642000-10	Controller	1		
10	3132-430001-0A	Electric fan	3		
11	3127-640002-10	Copper bar	2		
12	302001000107	Screw M6*12	2		
13	3127-642000-11	Controller	1		
14	304000000050	Lock washer ø6	16		
15	302001000107	Flat washer ø6	12		
16	304000000038	Flat washer ø4	12		
17	302000000056	Screw M10*20	2		
18	304000000036	Bolt M6x12	2		
19	302000000370	Bolt M6*35	8		
20	302000000486	Screw M8*60	4		
21	302001000110	Screw M6*16	4		
22	301002000014	Bolt M8*20	4		
23	302000000329	Screw M4*30	12		
24	304000000048	Lock washer ø4	12		

0502 Control Bracket Assembly(ICE251B)

Index	Part No.	Part Name	No.	Applied Date	Remark
25	304000000035	Flat washer ø10	2		
26	304000000052	Lock washer ø8	8		
27	304000000040	Flat washer ø8	8		
28	304000000053	Lock washer ø10	2		

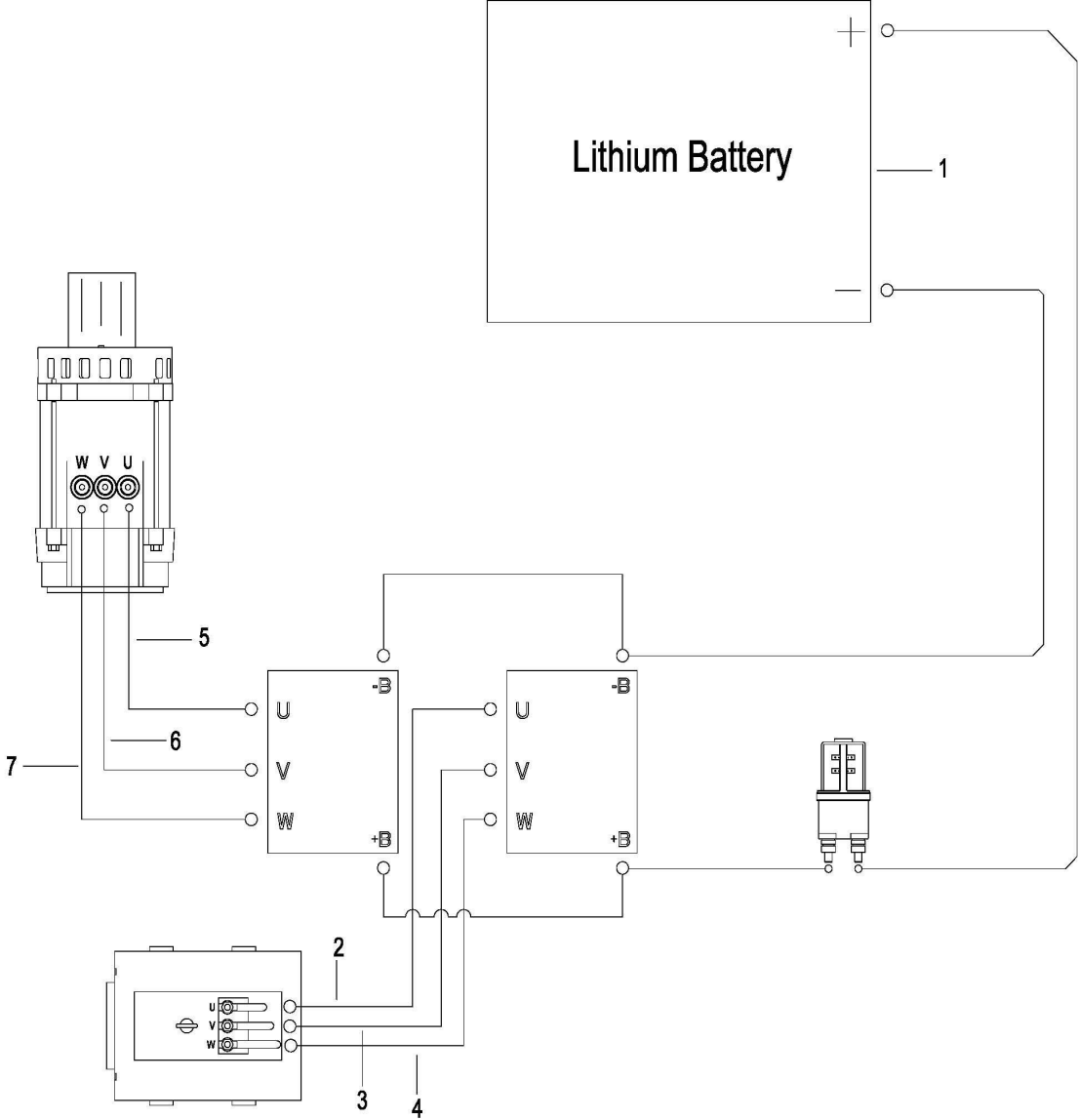
0503 Control Bracket Assembly (ICE251、EFL252)



0503 Control Bracket Assembly (ICE251、EFL252)

Index	Part No.	Part Name	No.	Applied Date	Remark
1	3132-641000-D0	Control Bracket	1		
2	3132-640001-D0	Aluminum plate	1		
3	302000000370	Screw M6*35	4		
4	304000000050	Lock washer ø6	4		
5	304000000036	Flat washer ø6	4		
6	01 3132-642000-D0	Controller	1		Superseded by#3218-600100-63,For BGD-21-001807
	02 3218-600100-63	Controller	1		
7	302001000099	Screw M6*25	8		
8	304000000050	Lock washer ø6	8		
9	304000000036	Flat washer ø6	8		
10	3218-634000-10	Contacto 48V	1		
11	302001000107	Screw M6*12	2		
12	304000000050	Lock washer ø6	2		
13	304000000036	Flat washer ø6	2		
14	4105-620004-C0	Fuse Harness	1		
15	302001000107	Screw M6*12	2		
16	304000000050	Lock washer ø6	2		
17	304000000036	Flat washer ø6	2		
18	3530-642000-00	DC-DC Converter	1		
19	302001000110	Screw M6*16	4		
20	304000000050	Lock washer ø6	4		
21	3132-430001-0A	Fan 12V	3		
22	302000000329	Screw M4*30	12		
23	304000000048	Lock washer ø6	12		
24	304000000038	Flat washer ø6	12		
25	3132-640004-0A	Copper bar	1		

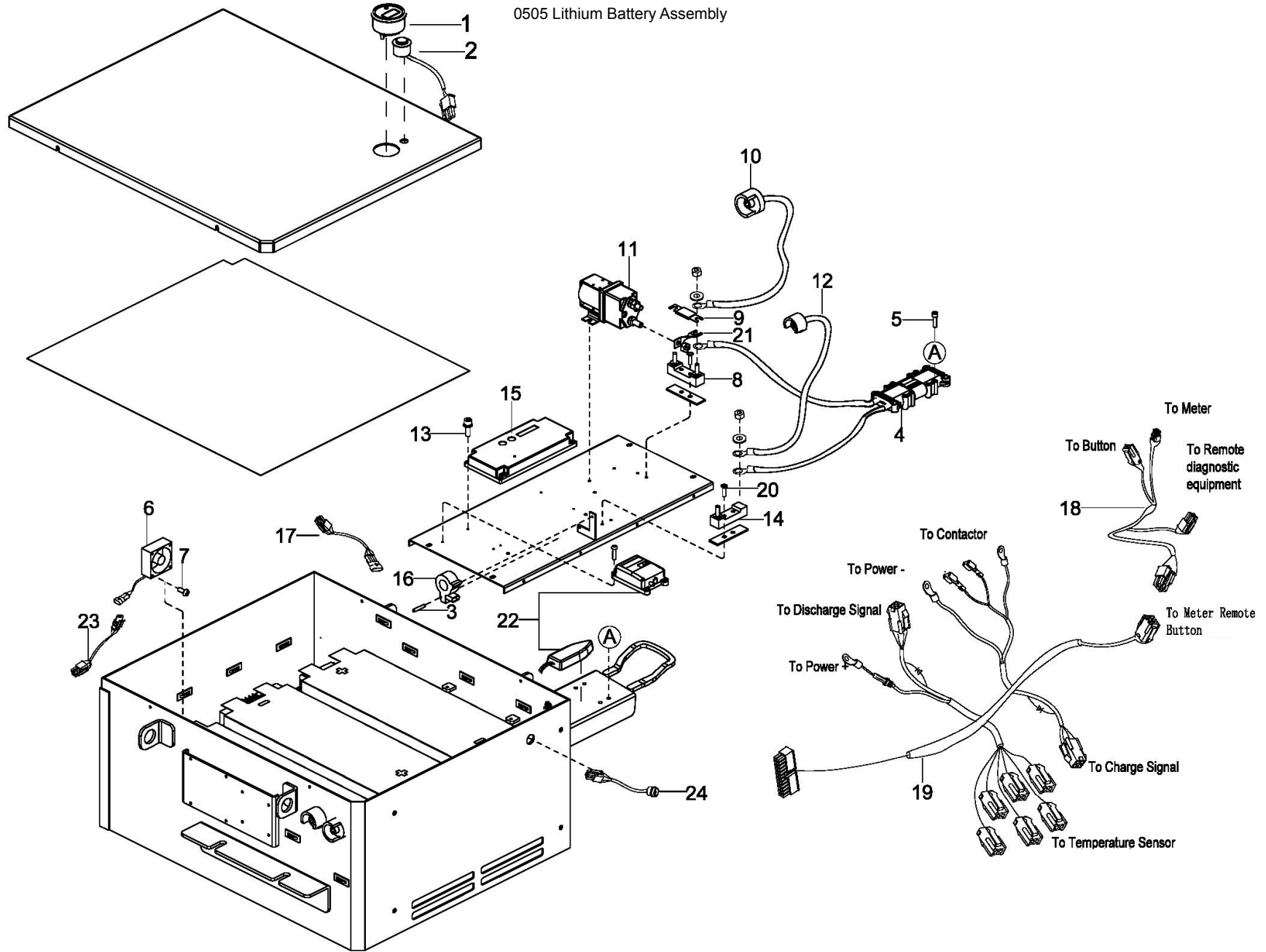
0504 Cable



0504 Cable

Index	Part No.	Part Name	No.	Applied Date	Remark
1	LB78-00000Z-08	Lithium Battery	1		80V205AH, ICE251B (option) 、EFL252、ICE251
1	LB78-00000Z-10	Lithium Battery	1		80V155AH, ICE251B
1	LB78-00000Z-07	Lithium Battery	1		80V280AH,ICE251B (option) ,
2	3127-620001-00	Traction Power Cable U	1		
3	3127-620002-00	Traction Power Cable V	1		
4	3127-620003-00	Traction Power Cable W	1		
5	3127-620005-00	Pump Motor cable U	1		
6	3127-620006-00	Pump Motor cable V	1		
7	3127-620007-00	Pump Motor cable W	1		

0505 Lithium Battery Assembly

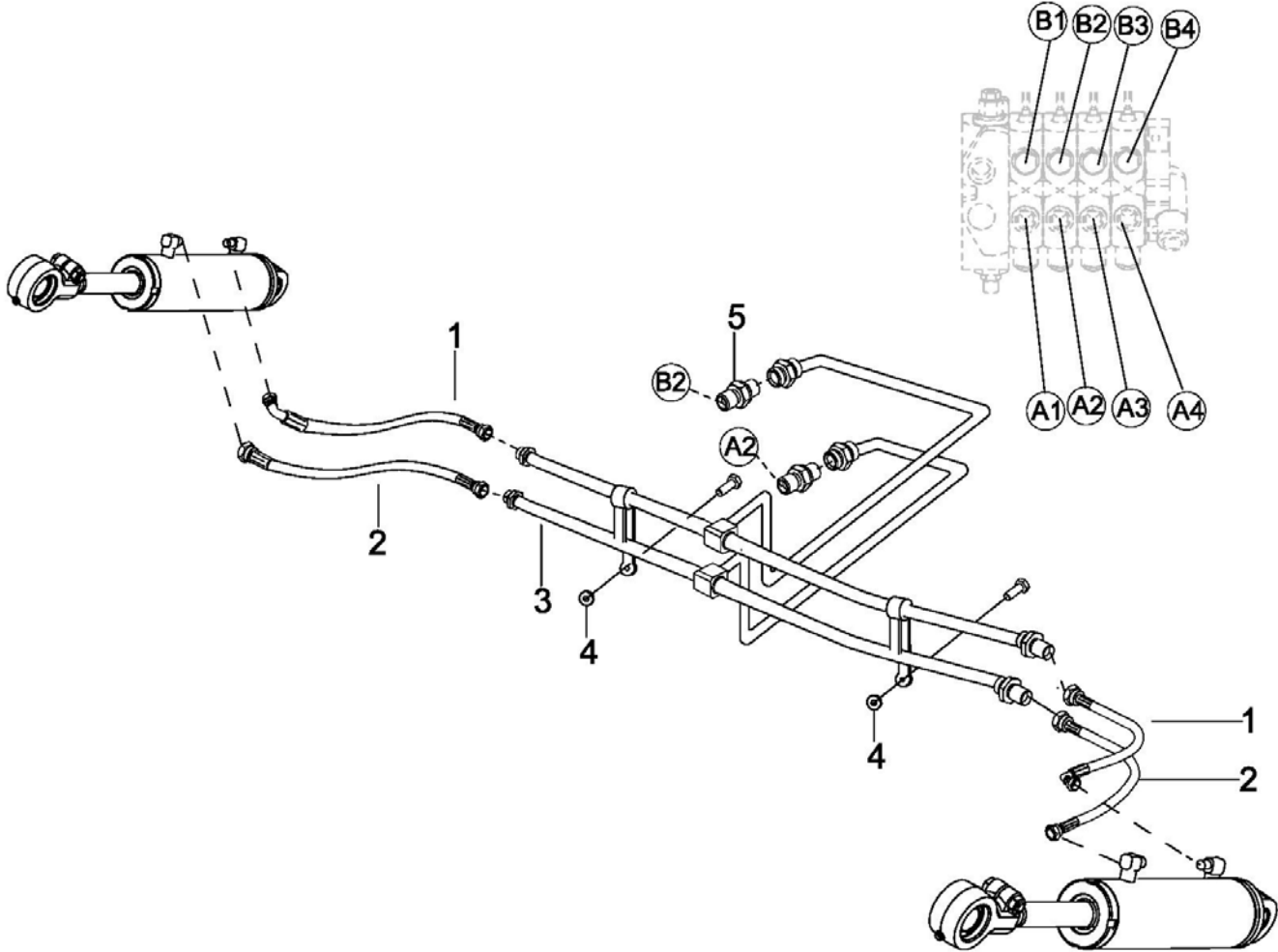


0505 Lithium Battery Assembly

Index	Part No.	Part Name	No.	Applied Date	Remark
1	LB00-200011-00	Coulombmeter	1		
2	LB11-400020-0A	Button Harness	1		
3	LB00-300045-00	Nylon	2		
4	LB78-400041-00	Line	1		
5	302003000004	Screw M6×16	4		
6	LB11-400019-00	Fan Harness	4		
7	302004000007	Screw M4*30	16		
8	LB00-200008-00	Fuse Block	1		
9	LB00-200157-00	Fuse 500A	1		
10	LB00-200231-00	Column	1		
11	LB00-200005-00	Contacto 48V	1		
12	LB00-200232-00	Column	1		
13	202800000005	Screw M4*16	4		
14	LB00-200058-00	Base	1		
15	LB00-200043-00	Bracket	1		
16	LB00-200042-00	Sensor	1		
17	LB23-400014-0A	Sensor harness	1		
18	LB23-400020-00	Button Harness	1		
19	LB30-400008-1H	Main Wire Harness	1		
20	302003000004	Screw M6*16	4		
21	LB11-400012-0A	Copper bar 48V	1		
22	LB00-200238-00	Remote Diagnostic Client	1		Option
23	LB11-400022-0A	Fan transfer line	2		
24	LB06-400012-1D	Communication line	1		

6000

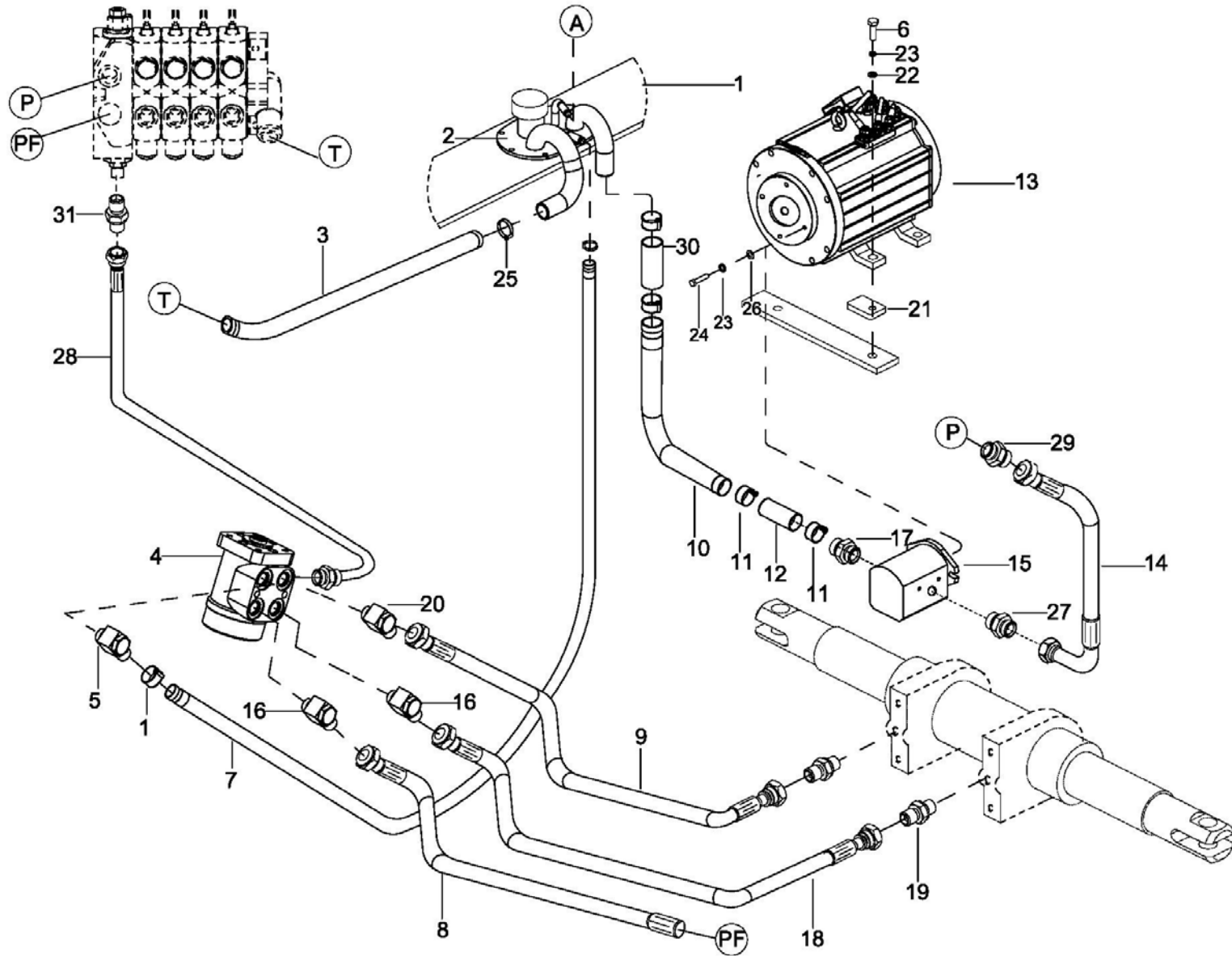
0601 Hydraulic System I



0601 Hydraulic System I

Index	Part No.	Part Name	No.	Applied Date	Remark
1	3127-721000-00	Hose	2		
2	7830-710011-S0	Rubber hose assembly	2		
3	7331-710100-00	Steel pipe assembly	1		
4	7331-500015-00	Bushing	2		
5	2701-201600-00	Connector	2		

0602 Hydraulic System I

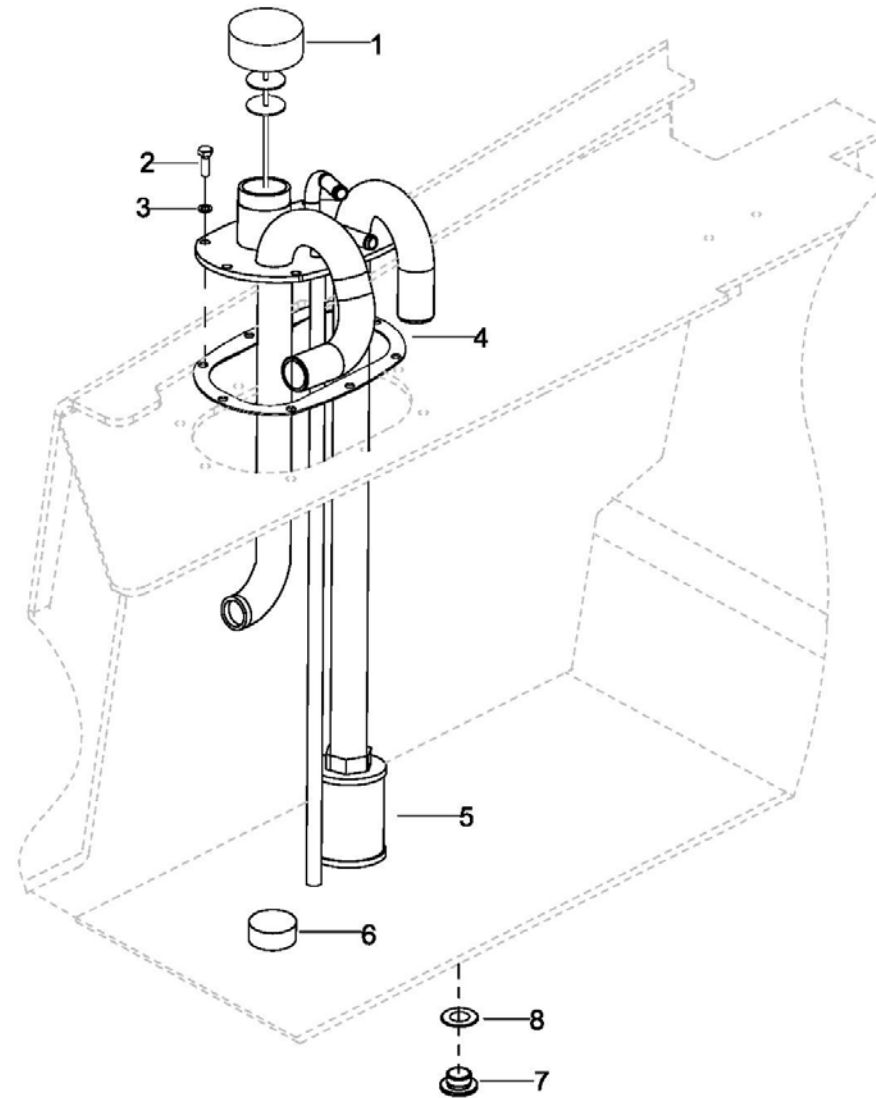


0602 Hydraulic System II

Index	Part No.	Part Name	No.	Applied Date	Remark
1	7500-190019-00-00	Clip ø23	2		
2	See0603	Hydraulic tank	1		
3	7331-710010-00	Hose	1		
4	3132-710010-00	Connector	1		
5	7331-700004-00	Stopper	1		
6	301004000059	Bolt M10*40	4		
7	3127-700002-00	Redirector Rreturn Hose	1		
8	7331-710054-00	Hose,Redirector to Steering	1		
9	3127-722000-00	Hose	1		
10	3127-700001-00	Oil suction pipe	1		
11	0000-000471-00	Clip ø32-40	5		
12	3111-500002-B0	Hose	2		
13	3132-660000-10	Pump Motor	1		
14	3701-621000-00	Hose	1		
15	3815-750000-00	Gear Pump	1		
16	7331-700005-00	Stopper	2		
17	2713-243200-00	Connector M24×1.5-ø32	1		
18	3127-723000-00	Hose,Redirector to Steering	1		
19	2701-161600-00	Connector	2		
20	7331-700003-00	StopperM20-M16	1		
21	3218-600006-00	Shock Absorber	4		
22	304000000119	Lock washer ø10	4		
23	304000000053	Flat washer ø10	8		
24	301002000028	Bolt M10*30	4		
25	202800000025	Clip ø44	2		

25		202800000025	Clip ø44	1		
26		304000000035	Lock washer ø10	4		
27	01	2701-222090-A0	Connector M22×1.5-M20×1.5	1		Superseded by#2701-222000-00,For EP20210317
	02	2701-222000-00	Connector M22*1.5-M20*1.5	1		
28		3132-730300-00	Hose	1		
29	01	7830-100100-20	Connector	1		Superseded by#2701-222090-A0,For EP20210317
	02	2701-222090-A0	Connector M22×1.5-M20×1.5	1		

0603 Hydraulic oil



0603 Hydraulic oil

Index	Part No.	Part Name	No.	Applied Date	Remark
1	7331-580000-00	Gas cover	1		
2	301004000022	Bolt M8*1*20	8		
3	7331-710051-00	Casket	1		
4	306000000137	Lockwasher ø8	8		
5	3218-110008-00	Oil Filter	1		
6	3218-110010-00	Magnet	1		
7	3218-110001-00	Plug Drain M18*1.5	1		
8	306001000003	Washer ø18	1		